
Subject: TheIDE fie choser dialog can't recongize Chinese
Posted by [Anonymous](#) on Mon, 21 Aug 2006 06:48:11 GMT
[View Forum Message](#) <> [Reply to Message](#)

heIDE fie choser dialog can't recongize Chinese correctly,so how to solve this?

Subject: Re: TheIDE fie choser dialog can't recongize Chinese
Posted by [mirek](#) on Mon, 21 Aug 2006 07:10:45 GMT
[View Forum Message](#) <> [Reply to Message](#)

Which OS?

What problem looks like? Missing characters (boxes) or something worse?

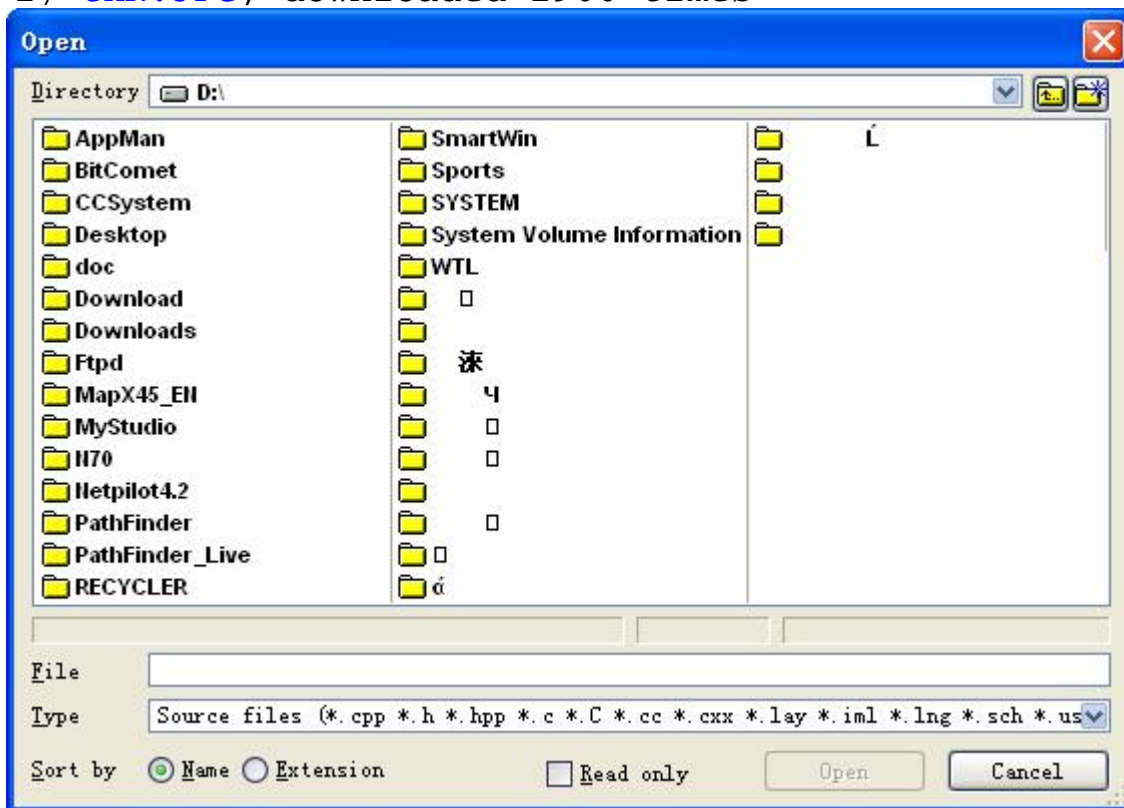
Mirek

Subject: Re: TheIDE fie choser dialog can't recongize Chinese
Posted by [Anonymous](#) on Mon, 21 Aug 2006 09:04:33 GMT
[View Forum Message](#) <> [Reply to Message](#)

windowsXP,please see attatch

File Attachments

1) [CHN.JPG](#), downloaded 1966 times



Subject: Re: TheIDE fie choser dialog can't recongize Chinese
Posted by [mirek](#) on Mon, 21 Aug 2006 09:15:49 GMT
[View Forum Message](#) <> [Reply to Message](#)

Thanks.

I believe this is the font problem. We are using Arial for that filelist.

This is a little bit difficult to solve, so please help. In order to have some minimal font support in apps, U++ defines 3 "fundamental" scalable fonts: sans-serif ("Arial"), serif ("Roman") and monospace ("Courier").

These fonts in Windows environment are mapped to Arial, Times New Roman and Courier.

BTW, similar scheme is used in HTML protocol.

Now it seems like we should use different fonts for chinese environment, as Arial obviously lacks chinese glyphs.

So comes the question: How these settings look like in your web browser? E.g. in firefox, in Tools/Options/Content/Advanced?

Mirek

Subject: Re: TheIDE fie choser dialog can't recongize Chinese
Posted by [Anonymous](#) on Mon, 21 Aug 2006 09:23:33 GMT
[View Forum Message](#) <> [Reply to Message](#)

just another try failed:in following block,I can't input Chinese to replace "hello".

```
test::test()
{
  CtrlLayout(*this, "hello");
}
```

```
GUI_APP_MAIN
{
  test().Run();
}
```

Subject: Re: TheIDE fie choser dialog can't recongize Chinese
Posted by [Anonymous](#) on Mon, 21 Aug 2006 09:27:12 GMT

my firefox settings:

File Attachments

1) [FF.JPG](#), downloaded 1907 times



Subject: Re: TheIDE file choser dialog can't recongize Chinese
Posted by [mirek](#) on Mon, 21 Aug 2006 09:28:39 GMT

[View Forum Message](#) <> [Reply to Message](#)

hongdong wrote on Mon, 21 August 2006 05:23just another try failed:in following block,I can't input Chinese to replace "hello".

```
test::test()
{
  CtrlLayout(*this, "hello");
}
```

```
GUI_APP_MAIN
{
  test().Run();
}
```

Well, this one is most likely caused by file encoding setting. Go to File properties and check. Then

adjust the font in Environment settings to make it work...

Mirek

Subject: Re: TheIDE fie choser dialog can't recongize Chinese

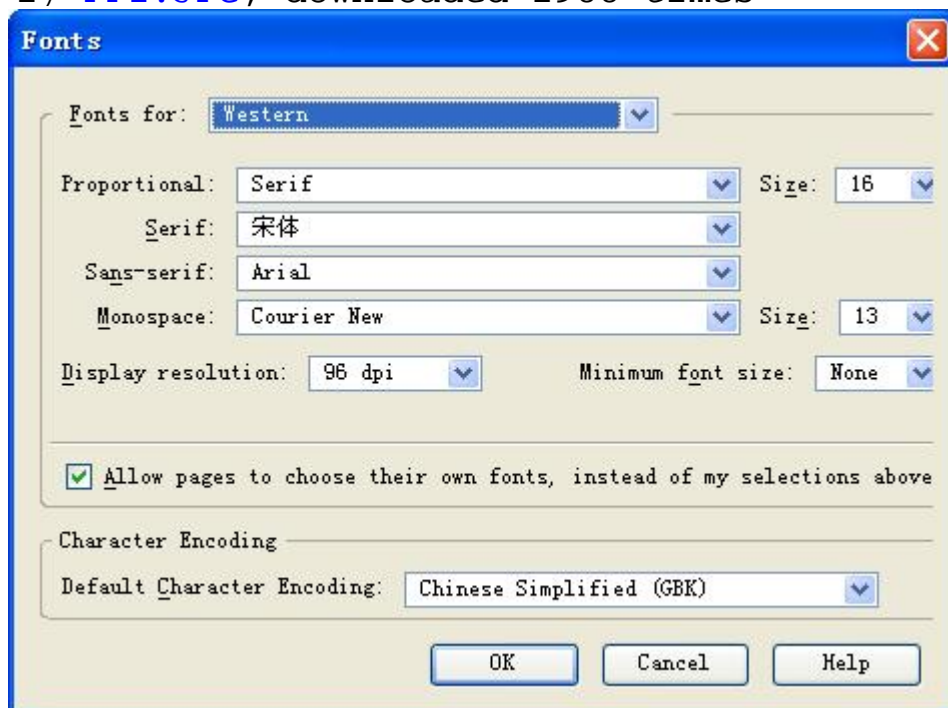
Posted by [Anonymous](#) on Mon, 21 Aug 2006 09:28:56 GMT

[View Forum Message](#) <> [Reply to Message](#)

AND:

File Attachments

1) [FF2.JPG](#), downloaded 1988 times



Subject: Re: TheIDE fie choser dialog can't recongize Chinese

Posted by [mirek](#) on Mon, 21 Aug 2006 09:30:45 GMT

[View Forum Message](#) <> [Reply to Message](#)

hongdong wrote on Mon, 21 August 2006 05:28AND:

Great, that supports the theory (you see these 3 fonts we are using too, and you have some chinese name there).

Have you had to enter these fonts there, or did firefox the necessary detection for you?

Where that font comes from?

Mirek

Subject: Re: TheIDE fie choser dialog can't recongize Chinese
Posted by [Anonymous](#) on Mon, 21 Aug 2006 09:34:30 GMT
[View Forum Message](#) <> [Reply to Message](#)

I have change the settings,FF'S(english ver)default settings also works for me.the fonts come with Windows,just need to set the default local as Chinese.that's enough

Subject: Re: TheIDE fie choser dialog can't recongize Chinese
Posted by [Anonymous](#) on Mon, 21 Aug 2006 09:36:48 GMT
[View Forum Message](#) <> [Reply to Message](#)

In file property,there is no Chinese related Encoding,I hope I can help,but I don't know both U++ and Encoding knowledge.sorry

Subject: Re: TheIDE fie choser dialog can't recongize Chinese
Posted by [mirek](#) on Mon, 21 Aug 2006 09:38:07 GMT
[View Forum Message](#) <> [Reply to Message](#)

Actually, what we need to resolve now is to how to replace that Arial/Roman/Courier with the chinesse font, perhaps when local is chinesse.

Any idea?

Mirek

Subject: Re: TheIDE fie choser dialog can't recongize Chinese
Posted by [Anonymous](#) on Mon, 21 Aug 2006 09:42:18 GMT
[View Forum Message](#) <> [Reply to Message](#)

yes,UltraEdit can be a example,when choose CHN local,every thing is Chinese friendly.that
