
Subject: file tab [BUGS][FIXED]

Posted by [hojtsy](#) on Mon, 23 Jan 2006 21:37:42 GMT

[View Forum Message](#) <> [Reply to Message](#)

first bug: Open a file from the current project. Rename the file by right-clicking on the project navigation tree. A new tab opens with the new name but the old tab remains open - it should have been removed.

another bug: Run a Query (Ctrl-Q), and from the list which displays on the bottom select multiple methods in the same class, so that the same files gets opened multiple times. Try to close the tab before the last one by clicking on the X icon. The tab is not closed just switch places with the other tabs, so all tabs remain open. This can only be reproduces in about 75% of the attempts.

Subject: Re: file tab bugs

Posted by [hojtsy](#) on Thu, 09 Feb 2006 12:31:00 GMT

[View Forum Message](#) <> [Reply to Message](#)

Here is another one:

Start Thelde. Choose any package. Switch to an other package, and then switch to another again. You should have 3 open file tabs now. Try to close the rightmost file tab. It remains open, only the focused tab changes.

Subject: Re: file tab bugs

Posted by [mirek](#) on Sun, 19 Feb 2006 14:56:42 GMT

[View Forum Message](#) <> [Reply to Message](#)

Hopefully fixed.

Mirek

Subject: Re: file tab bugs

Posted by [hojtsy](#) on Tue, 21 Feb 2006 10:26:55 GMT

[View Forum Message](#) <> [Reply to Message](#)

Seems fixed to me.

Subject: Re: file tab bugs

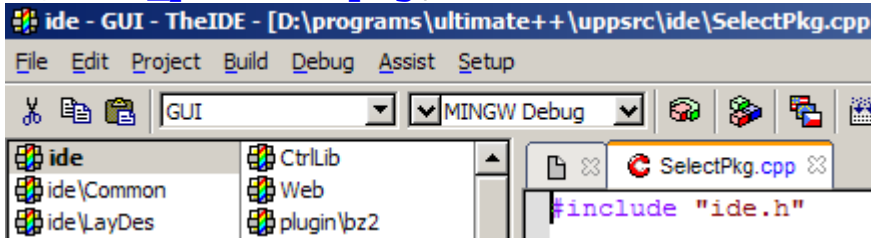
Posted by [hojtsy](#) on Tue, 21 Feb 2006 18:53:28 GMT

[View Forum Message](#) <> [Reply to Message](#)

Here is a new file tab bug. I selected ide package, no file was opened initially, then I selected a file. A dummy tab remained left of the new tab.

File Attachments

1) [tab_problem.png](#), downloaded 2338 times



Subject: Re: file tab bugs

Posted by [mirek](#) on Tue, 21 Feb 2006 19:13:56 GMT

[View Forum Message](#) <> [Reply to Message](#)

I am trying to catch that for some time, but was unsuccessful reproducing it....

Mirek

Subject: Re: file tab bugs

Posted by [hojtsy](#) on Tue, 21 Feb 2006 19:24:10 GMT

[View Forum Message](#) <> [Reply to Message](#)

I was only able to produce it directly after installation. Because file open history is empty then. Later when I select the package there is a "previously open" file which is reopened in a normal tab when the ide package is selected.

Subject: Re: file tab bugs

Posted by [mirek](#) on Tue, 21 Feb 2006 19:27:17 GMT

[View Forum Message](#) <> [Reply to Message](#)

hojtsy wrote on Tue, 21 February 2006 14:24 I was only able to produce it directly after installation. Because file open history is empty then. Later when I select the package there is a "previously open" file which is reopened in a normal tab when the ide package is selected.

In fact there is logic that opens the first file in the main package if none is stored as previously open...

Mirek

Subject: Re: file tab bugs

Posted by [hojtsy](#) on Tue, 21 Feb 2006 19:46:03 GMT

[View Forum Message](#) <> [Reply to Message](#)

luzr wrote on Tue, 21 February 2006 14:27 In fact there is logic that opens the first file in the main package if none is stored as previously open...Could the problem be that the ide package has a grouping item (IDE) as the first entry and not a file?

Subject: Re: file tab bugs
Posted by [mirek](#) on Tue, 21 Feb 2006 19:53:12 GMT
[View Forum Message](#) <> [Reply to Message](#)

Wow, that could very well be that! Thanks!

Mirek

Subject: Re: file tab bugs
Posted by [mirek](#) on Fri, 24 Feb 2006 13:27:58 GMT
[View Forum Message](#) <> [Reply to Message](#)

Hopefully fixed.

Mirek
