
Subject: Build setup

Posted by [unodgs](#) on Mon, 09 Jun 2008 19:04:19 GMT

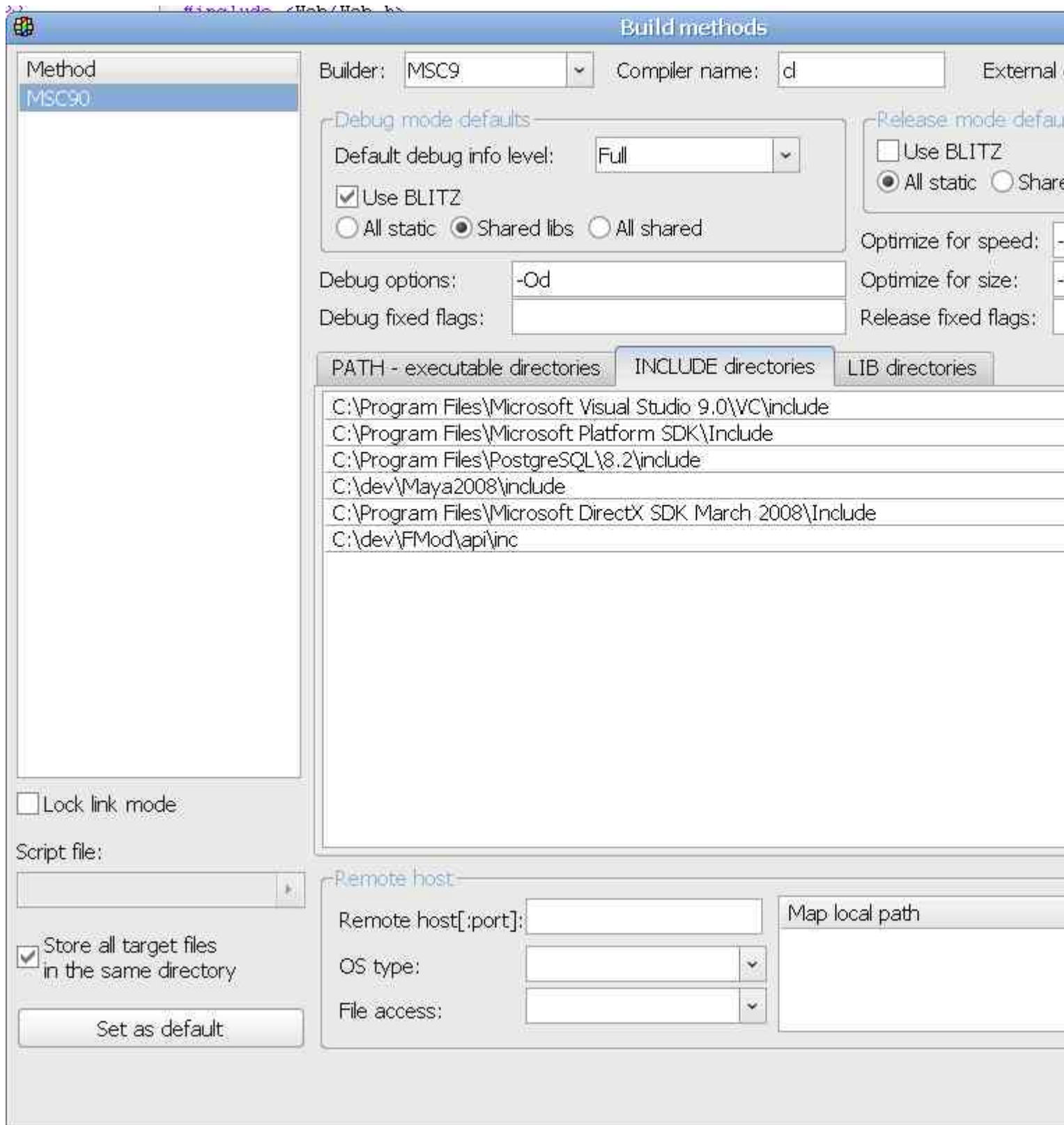
[View Forum Message](#) <> [Reply to Message](#)

I have reorganized a bit a new build setup. In current layout paths are very often cut. Look at the new approach:

Mirek (and others) do you like it? If yes I will commit this change.

File Attachments

1) [ide.jpg](#), downloaded 659 times



Subject: Re: Build setup
Posted by [Mindtraveller](#) on Tue, 10 Jun 2008 16:55:13 GMT

[View Forum Message](#) <> [Reply to Message](#)

I like it, because in current version path strings are too long to fit into the smaller controls. In the other hand it makes impossible to watch all the directories at once which is not very comfortable. May be it would be more comfortable just to arrange these directory controls vertically, one above another?

Subject: Re: Build setup
Posted by [unodgs](#) on Tue, 10 Jun 2008 17:38:53 GMT
[View Forum Message](#) <> [Reply to Message](#)

Added to main tree.
