
Subject: wrong layout dimensioning under X11
Posted by masu on Thu, 29 Jun 2006 21:00:04 GMT
[View Forum Message](#) <> [Reply to Message](#)

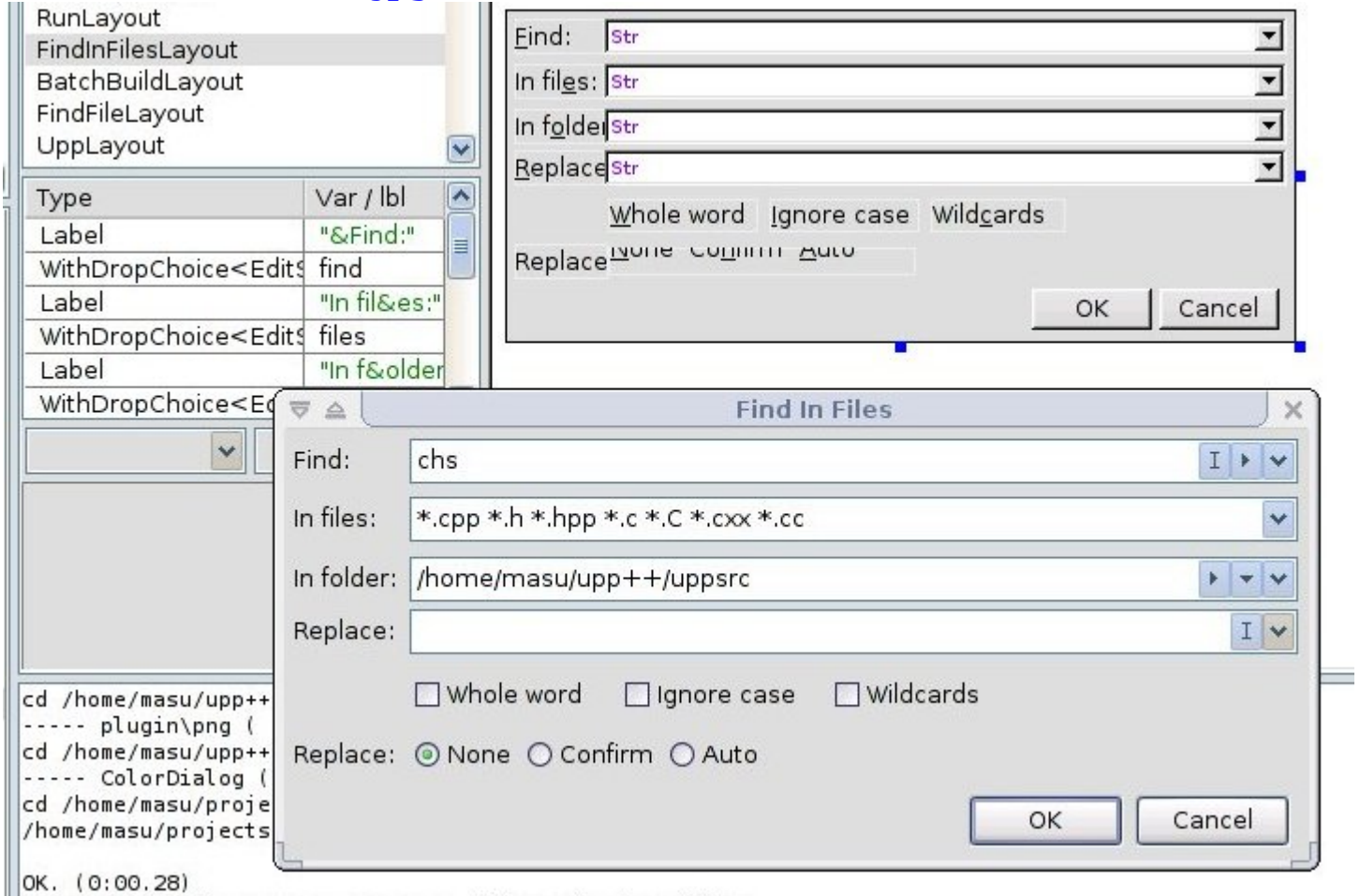
I have a problem with the layout designers widget dimensions.
I opened the FindInFilesLayout in ide.lay and it does not display the real dimesions exactly. The picture attached shows the dialog layout and the real dialog (lower one).

I use a desktop resolution of 1024x768.
Is it the same with Linux?

Matthias

File Attachments

1) [find_in_files.jpg](#), downloaded 2878 times



Subject: Re: wrong layout dimensioning under X11

Posted by [mirek](#) on Fri, 30 Jun 2006 04:43:52 GMT

[View Forum Message](#) <> [Reply to Message](#)

masu wrote on Thu, 29 June 2006 17:00I have a problem with the layout designers widget dimensions.

I opened the FindInFilesLayout in ide.lay and it does not display the real dimesions exactly. The picture attached shows the dialog layout and the real dialog (lower one).

I use a desktop resolution of 1024x768.

Is it the same with Linux?

Matthias

Yes, sorry, it is already on ToDo... Actually, the problem is that layout designer should "fontzoom" layout, which it still does not.

Mirek

Subject: Re: wrong layout dimensioning under X11

Posted by [masu](#) on Fri, 30 Jun 2006 06:36:58 GMT

[View Forum Message](#) <> [Reply to Message](#)

Unfortunately, this is not the only problem .

All dialogs seem to be too big, for example the package organizer dialog is about 800x600 on win32 and bigger than 1024x768 on X11.

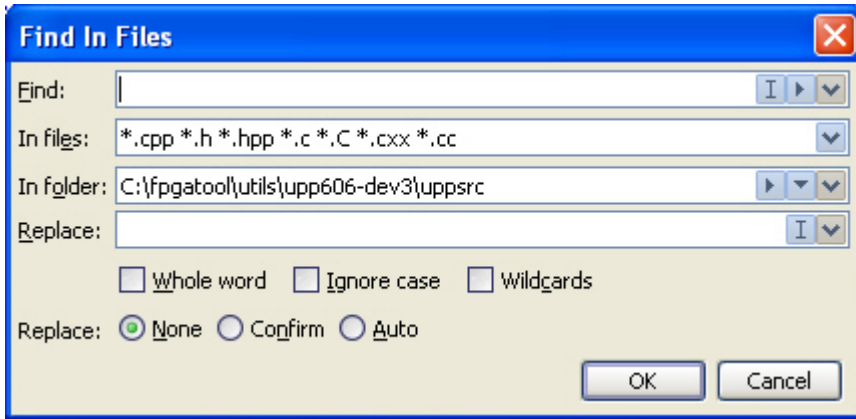
An example is the screenshot above, it shows the Find in Files dialog exactly as it appears on my screen. But if you look at this on win32 you see:

I am not sure if this is related to each other.

Matthias

File Attachments

1) [find_in_files_win32.jpeg](#), downloaded 2864 times



Subject: Re: wrong layout dimensioning under X11
Posted by [mirek](#) on Fri, 30 Jun 2006 07:49:07 GMT
[View Forum Message](#) <> [Reply to Message](#)

masu wrote on Fri, 30 June 2006 02:36 Unfortunately, this is not the only problem . All dialogs seem to be too big, for example the package organizer dialog is about 800x600 on win32 and bigger than 1024x768 on X11. An example is the screenshot above, it shows the Find in Files dialog exactly as it appears on my screen. But if you look at this on win32 you see:

I am not sure if this is related to each other.

Matthias

Well, yes and no: The basic idea behind "fontzoom" is that layout has to be proportionally adjusted to current font size.

Means if it is designed to be 800x600 for standard window font, it can be easily too big in X11.

The only solution I can see is to make layouts smaller, with good reserve for "big font" environments...

Mirek

Subject: Re: wrong layout dimensioning under X11
Posted by [masu](#) on Fri, 30 Jun 2006 08:06:18 GMT
[View Forum Message](#) <> [Reply to Message](#)

luzr wrote on Fri, 30 June 2006 09:49

Well, yes and no: The basic idea behind "fontzoom" is that layout has to be proportionally adjusted to current font size.

Means if it is designed to be 800x600 for standard window font, it can be easily too big in X11.

The only solution I can see is to make layouts smaller, with good reserve for "big font" environments...

Mirek

I see, so changing the font size in my environment would also change dialog size proportionally, right?

Matthias

Subject: Re: wrong layout dimensioning under X11
Posted by [mirek](#) on Fri, 30 Jun 2006 08:22:54 GMT

[View Forum Message](#) <> [Reply to Message](#)

Yes. In fact, I see no other possibility.

BTW, windows .RC based dialogs behave the same.

Mirek