
Subject: TheIDE fatal error crash

Posted by [jjacksonRIAB](#) on Wed, 16 Feb 2022 10:25:15 GMT

[View Forum Message](#) <> [Reply to Message](#)

To replicate under Linux:

1. Go into output mode
 2. Type "abcdefghijklmnop" into textbox
 3. Click Used or All button
 4. Observe Fatal error Invalid memory access popup
-

Subject: Re: TheIDE fatal error crash

Posted by [Klugier](#) on Sat, 19 Feb 2022 21:55:54 GMT

[View Forum Message](#) <> [Reply to Message](#)

Hello,

Could you put screenshot? I can not reproduce the bug.

Klugier

Subject: Re: TheIDE fatal error crash

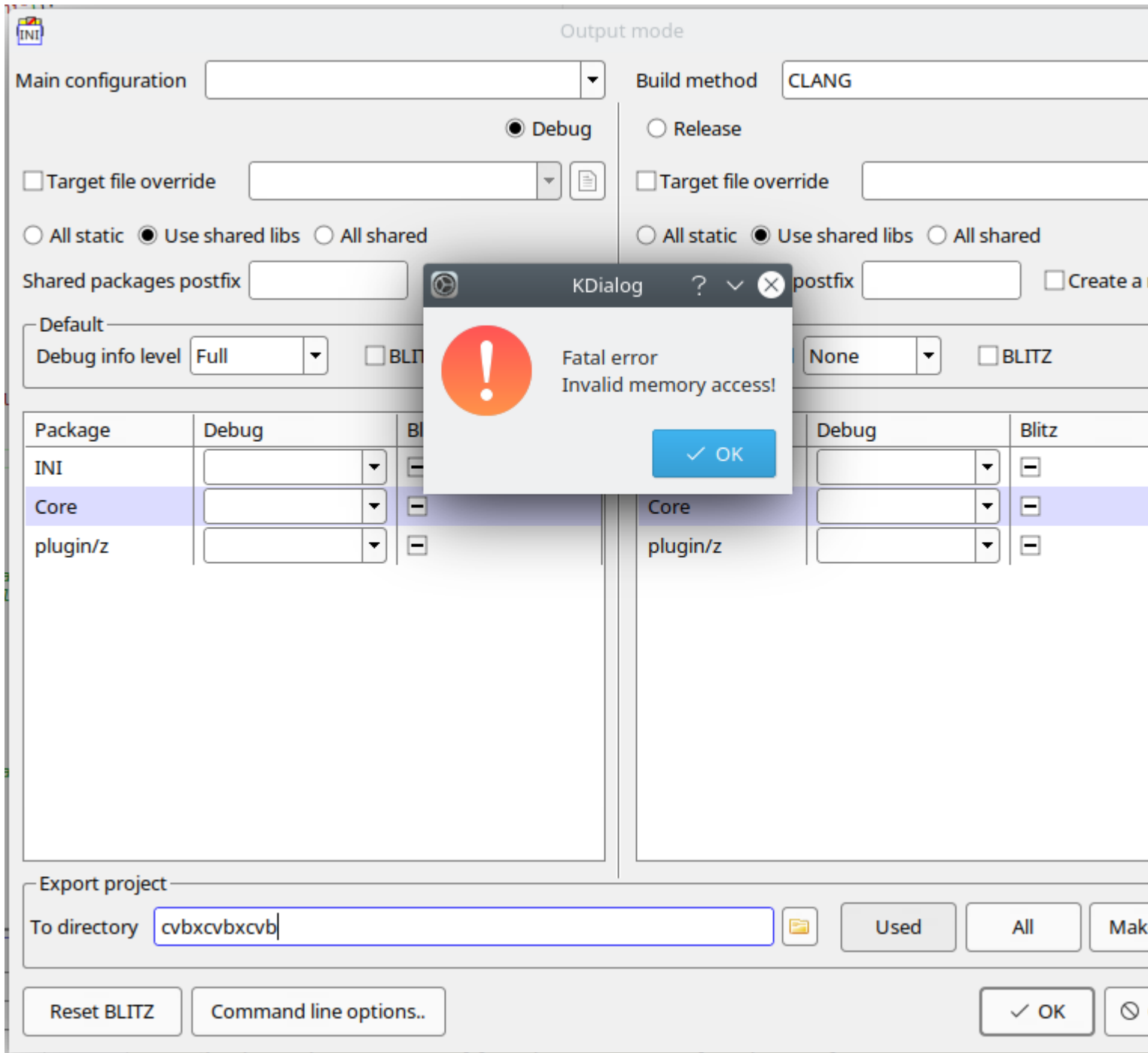
Posted by [jjacksonRIAB](#) on Sun, 20 Feb 2022 00:22:55 GMT

[View Forum Message](#) <> [Reply to Message](#)

Here you go

File Attachments

1) [crash.png](#), downloaded 282 times



Subject: Re: TheIDE fatal error crash

Posted by [jjacksonRIAB](#) on Sun, 20 Feb 2022 01:18:19 GMT

[View Forum Message](#) <> [Reply to Message](#)

Odd. It was happening every time before, but now it's only happening infrequently. I might have to chalk this up to some kind of OS issue instead of theide. It's just too bad I get zero information about what the issue actually is.
