
Subject: version 168847 (stable)
Posted by [BetoValle](#) on Sun, 23 Jul 2023 11:43:27 GMT
[View Forum Message](#) <> [Reply to Message](#)

Hi,

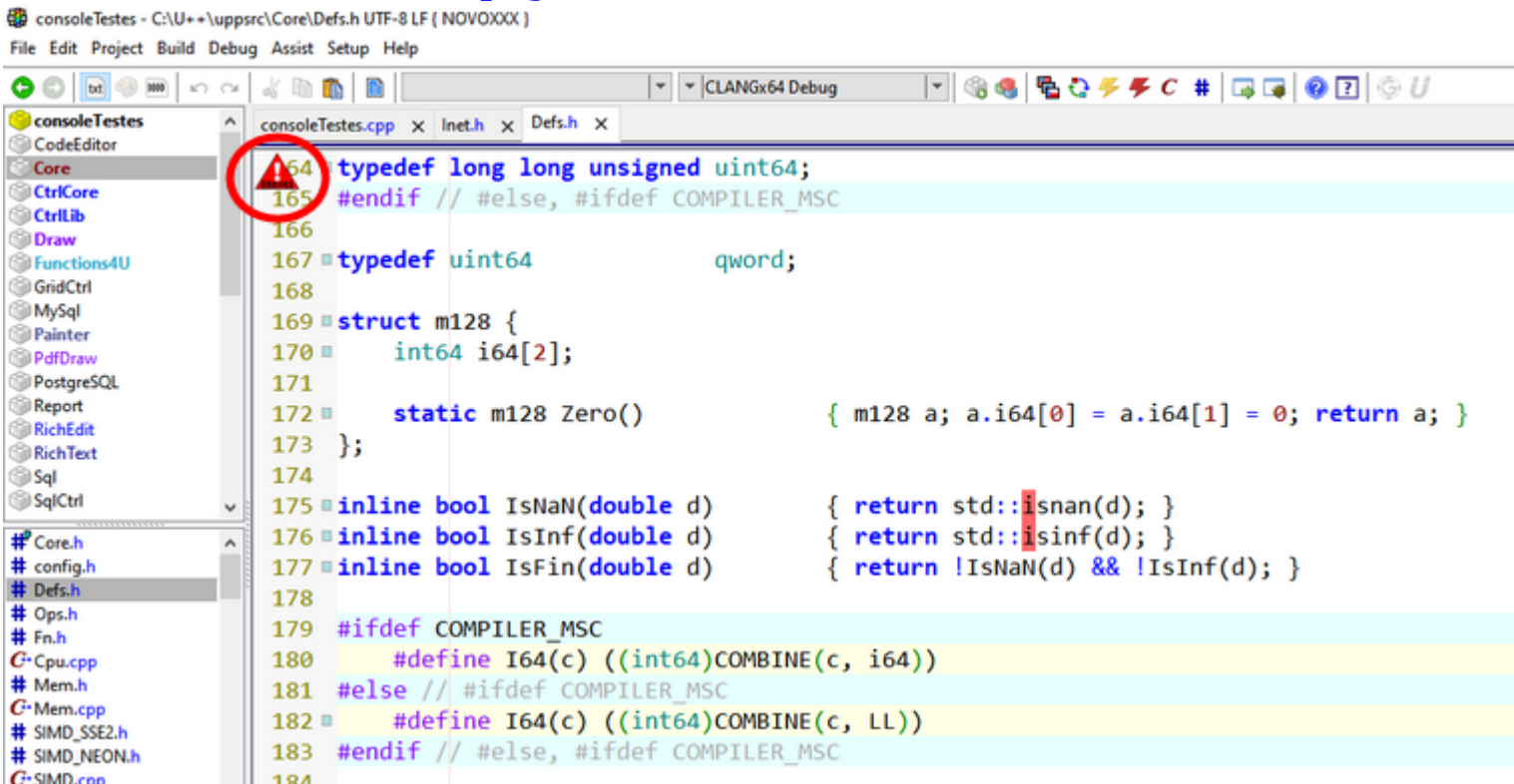
In a "simple navigation" between sources the ide displayed error in the lines of the Defs.h file
But I have no problems with the ide in this version, as I also did not make a direct call to this file.
Is there any inconsistency here ?

(lines 175,176 and 287)

Thanks!

File Attachments

1) [2023-07-23_083837.png](#), downloaded 275 times



```
consoleTestes - C:\U+*\uppsrc\Core\Defs.h UTF-8 LF (NOVXXXX)
File Edit Project Build Debug Assist Setup Help

CLANGx64 Debug

consoleTestes
CodeEditor
Core
  CtrlCore
  CtrlLib
  Draw
  Functions4U
  GridCtrl
  MySql
  Painter
  PdfDraw
  PostgreSQL
  Report
  RichEdit
  RichText
  Sql
  SqlCtrl
Core.h
config.h
Defs.h
Ops.h
Fn.h
Cpu.cpp
Mem.h
Mem.cpp
SIMD_SSE2.h
SIMD_NEON.h
SIMD.rn

164 typedef long long unsigned uint64;
165 #endif // #else, #ifdef COMPILER_MSC
166
167 typedef uint64 qword;
168
169 struct m128 {
170     int64 i64[2];
171
172     static m128 Zero() { m128 a; a.i64[0] = a.i64[1] = 0; return a; }
173 };
174
175 inline bool IsNaN(double d) { return std::isnan(d); }
176 inline bool IsInf(double d) { return std::isinf(d); }
177 inline bool IsFin(double d) { return !IsNaN(d) && !IsInf(d); }
178
179 #ifdef COMPILER_MSC
180     #define I64(c) ((int64)COMBINE(c, i64))
181 #else // #ifdef COMPILER_MSC
182     #define I64(c) ((int64)COMBINE(c, LL))
183 #endif // #else, #ifdef COMPILER_MSC
184
```

Subject: Re: version 168847 (stable)
Posted by [mirek](#) on Wed, 25 Oct 2023 07:52:44 GMT
[View Forum Message](#) <> [Reply to Message](#)

This is usually a bad mix of build method and host platform, problems with include files.

What is your OS / build method? Can you try with default CLANG?

Also, activate Setup / Settings / Assist / Assist diagnostics. When you do, there will be "Current file parse errors" in Assist menu. Do that (after error appears) and paste here, it might provide some clues...

Mirek

Subject: Re: version 168847 (stable)
Posted by [BetoValle](#) on Wed, 25 Oct 2023 11:52:08 GMT
[View Forum Message](#) <> [Reply to Message](#)

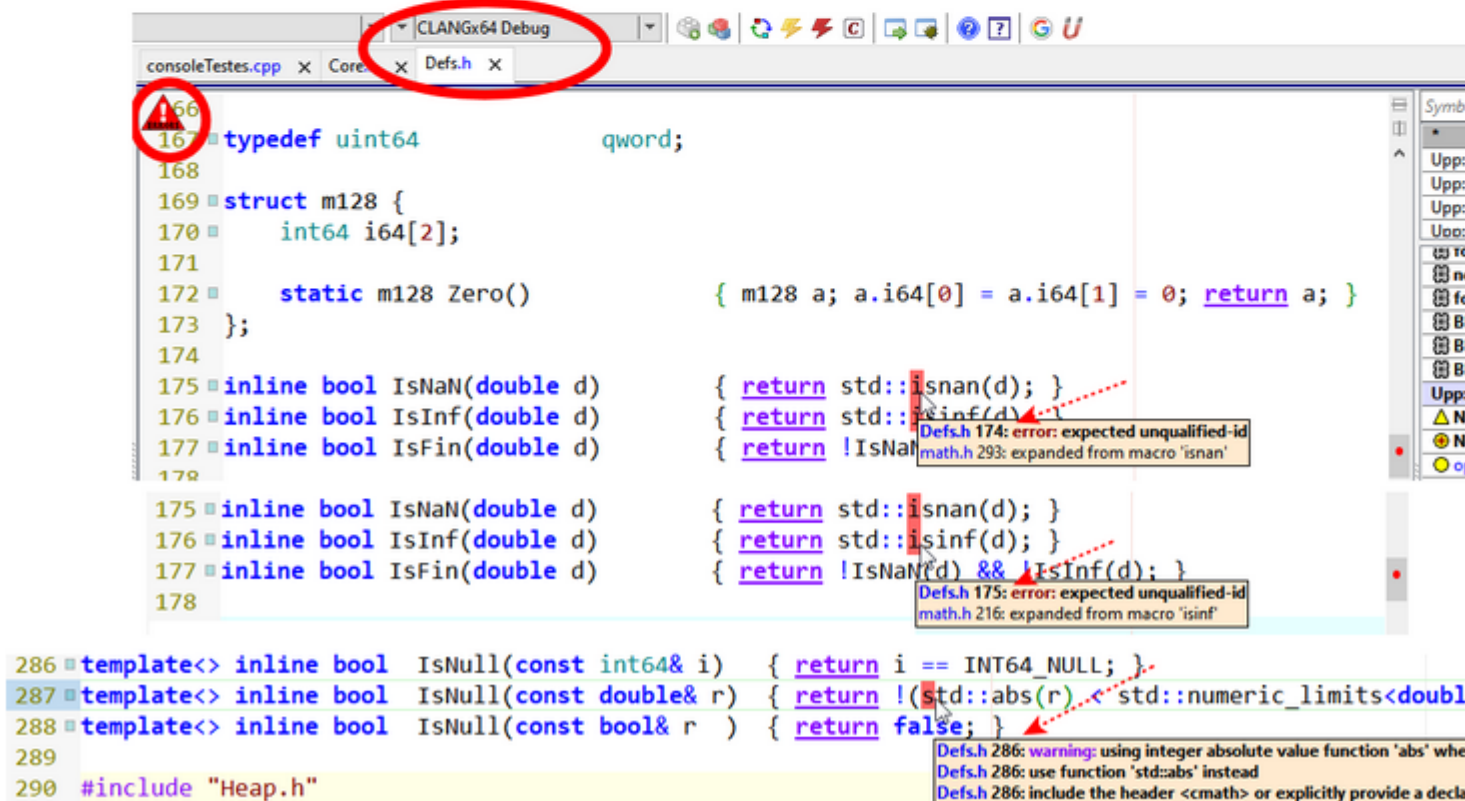
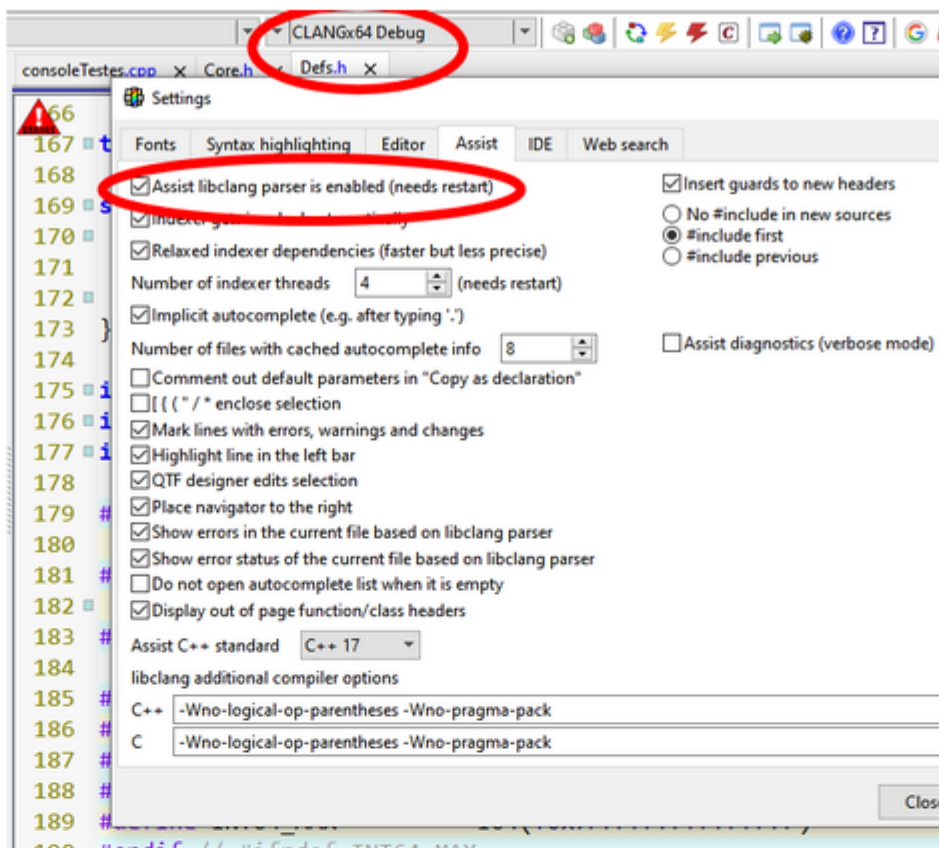
Hi,

Done!

File Attachments

1) [u++b.png](#), downloaded 213 times

Processador
RAM instalada 8,00 GB (utilizável: 7,88 GB)
Tipo de sistema Sistema operacional de 64 bits, processador baseado em x64
Especificações do Windows
Edição Windows 10 Pro
Versão 22H2



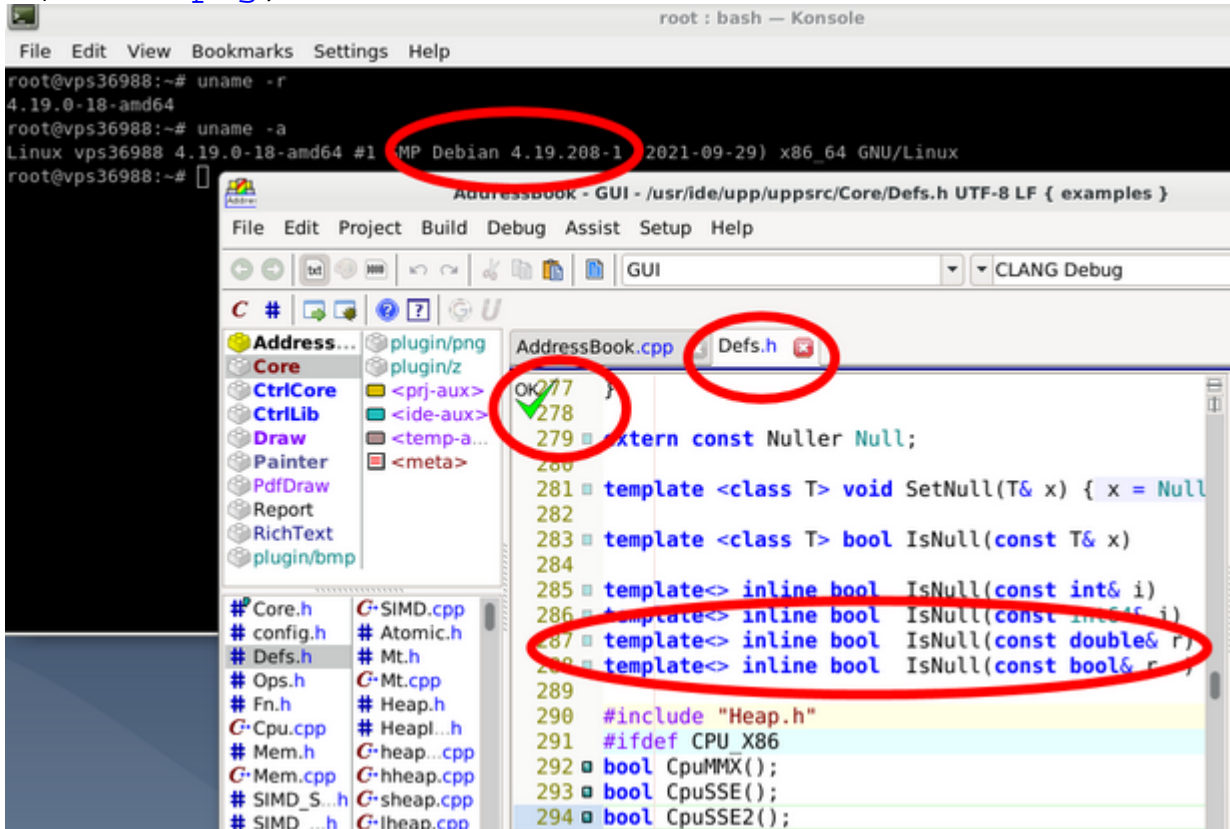
Subject: Re: version 168847 (stable)
Posted by [BetoValle](#) on Wed, 25 Oct 2023 12:16:32 GMT
[View Forum Message](#) <> [Reply to Message](#)

in linux Debian 10 this work ok!

see!

File Attachments

1) [u++c.png](#), downloaded 224 times



Subject: Re: version 168847 (stable)
Posted by [mirek](#) on Wed, 25 Oct 2023 12:20:45 GMT
[View Forum Message](#) <> [Reply to Message](#)

BetoValle wrote on Wed, 25 October 2023 13:52Hi,

Done!

Please reread my post.

Subject: Re: version 168847 (stable)

Posted by [BetoValle](#) on Wed, 25 Oct 2023 12:45:34 GMT

[View Forum Message](#) <> [Reply to Message](#)

you write

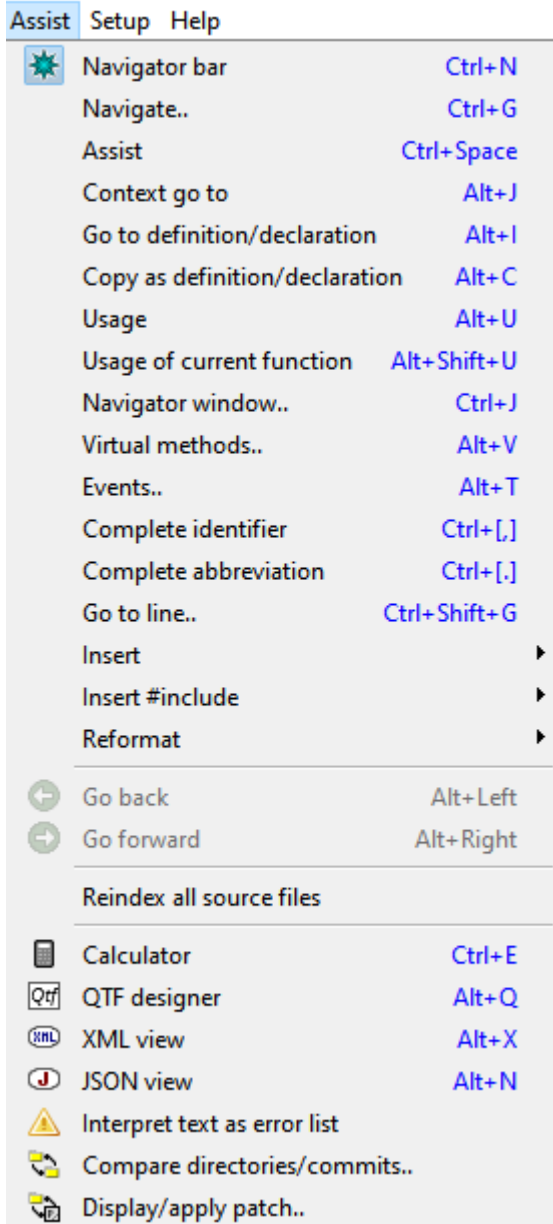
When you do, there will be "Current file parse errors" in Assist menu

see that in the Assist menu, according to the image I post, "Current file parse errors" does not appear. OR?

I couldn't subtly translate your step by step!

File Attachments

1) [u++d.png](#), downloaded 216 times
(Core\Defs.h UTF-8 LF { NOVOXXX })



Subject: Re: version 168847 (stable)
Posted by [mirek](#) on Wed, 25 Oct 2023 12:51:24 GMT
[View Forum Message](#) <> [Reply to Message](#)

Setup / Settings / Assist / Assist diagnostics

Subject: Re: version 168847 (stable)
Posted by [BetoValle](#) on Wed, 25 Oct 2023 12:58:26 GMT
[View Forum Message](#) <> [Reply to Message](#)

ok!

now show in menu the tab "parse errors" with lines below:

```
WARNING: C:\U++\bin\clang\include\stdio.h (157): '__format__' attribute argument not supported:
gnu_scanf
NOTE: C:\U++\uppsrc\plugin\png\pngupp.cpp (1): in file included from
C:\U++\uppsrc\plugin\png\pngupp.cpp:1:
NOTE: C:\U++\uppsrc\plugin\png\pngupp.cpp (2): in file included from
C:\U++\uppsrc\plugin\png\pngupp.cpp:2:
NOTE: C:\U++\uppsrc\plugin\png\lib\png.h (321): in file included from
C:\U++\uppsrc\plugin\png\lib\png.h:321:
NOTE: C:\U++\uppsrc\plugin\png\lib\pngconf.h (307): in file included from
C:\U++\uppsrc\plugin\png\lib\pngconf.h:307:
NOTE: C:\U++\bin\clang\include\stdio.h (1572): in file included from
C:\U++\bin\clang\include\stdio.h:1572:
NOTE: C:\U++\bin\clang\include\sec_api\stdio_s.h (9): in file included from
C:\U++\bin\clang\include\sec_api\stdio_s.h:9:
WARNING: C:\U++\bin\clang\include\stdio.h (160): '__format__' attribute argument not supported:
gnu_scanf
WARNING: C:\U++\bin\clang\include\stdio.h (163): '__format__' attribute argument not supported:
gnu_scanf
WARNING: C:\U++\bin\clang\include\stdio.h (166): '__format__' attribute argument not supported:
gnu_scanf
WARNING: C:\U++\bin\clang\include\stdio.h (169): '__format__' attribute argument not supported:
gnu_scanf
WARNING: C:\U++\bin\clang\include\stdio.h (172): '__format__' attribute argument not supported:
gnu_scanf
WARNING: C:\U++\bin\clang\include\stdio.h (176): '__format__' attribute argument not supported:
gnu_printf
WARNING: C:\U++\bin\clang\include\stdio.h (180): '__format__' attribute argument not supported:
gnu_printf
WARNING: C:\U++\bin\clang\include\stdio.h (183): '__format__' attribute argument not supported:
gnu_printf
WARNING: C:\U++\bin\clang\include\stdio.h (186): '__format__' attribute argument not supported:
gnu_printf
WARNING: C:\U++\bin\clang\include\stdio.h (189): '__format__' attribute argument not supported:
```

gnu_printf
WARNING: C:\U++\bin\clang\include\stdio.h (192): '__format__' attribute argument not supported:
gnu_printf
WARNING: C:\U++\bin\clang\include\stdio.h (195): '__format__' attribute argument not supported:
gnu_printf
WARNING: C:\U++\bin\clang\include\stdio.h (198): '__format__' attribute argument not supported:
gnu_printf
WARNING: C:\U++\bin\clang\include\stdio.h (201): '__format__' attribute argument not supported:
gnu_printf
WARNING: C:\U++\bin\clang\include\stdio.h (204): '__format__' attribute argument not supported:
gnu_printf
WARNING: C:\U++\bin\clang\include\stdio.h (208): '__format__' attribute argument not supported:
ms_scanf
WARNING: C:\U++\bin\clang\include\stdio.h (211): '__format__' attribute argument not supported:
ms_scanf
WARNING: C:\U++\bin\clang\include\stdio.h (214): '__format__' attribute argument not supported:
ms_scanf
WARNING: C:\U++\bin\clang\include\stdio.h (218): '__format__' attribute argument not supported:
ms_printf
WARNING: C:\U++\bin\clang\include\stdio.h (221): '__format__' attribute argument not supported:
ms_printf
WARNING: C:\U++\bin\clang\include\stdio.h (224): '__format__' attribute argument not supported:
ms_printf
WARNING: C:\U++\bin\clang\include\stdio.h (227): '__format__' attribute argument not supported:
ms_printf
WARNING: C:\U++\bin\clang\include\stdio.h (230): '__format__' attribute argument not supported:
ms_printf
WARNING: C:\U++\bin\clang\include\stdio.h (233): '__format__' attribute argument not supported:
ms_printf
WARNING: C:\U++\bin\clang\include\stdio.h (289): '__format__' attribute argument not supported:
gnu_scanf
WARNING: C:\U++\bin\clang\include\stdio.h (300): '__format__' attribute argument not supported:
gnu_scanf
WARNING: C:\U++\bin\clang\include\stdio.h (311): '__format__' attribute argument not supported:
gnu_scanf
WARNING: C:\U++\bin\clang\include\stdio.h (328): '__format__' attribute argument not supported:
gnu_scanf
WARNING: C:\U++\bin\clang\include\stdio.h (335): '__format__' attribute argument not supported:
gnu_scanf
WARNING: C:\U++\bin\clang\include\stdio.h (342): '__format__' attribute argument not supported:
gnu_scanf
WARNING: C:\U++\bin\clang\include\stdio.h (356): '__format__' attribute argument not supported:
gnu_printf
WARNING: C:\U++\bin\clang\include\stdio.h (367): '__format__' attribute argument not supported:
gnu_printf
WARNING: C:\U++\bin\clang\include\stdio.h (395): '__format__' attribute argument not supported:
gnu_printf
WARNING: C:\U++\bin\clang\include\stdio.h (408): '__format__' attribute argument not supported:

gnu_printf
WARNING: C:\U++\bin\clang\include\stdio.h (415): '__format__' attribute argument not supported:
gnu_printf
WARNING: C:\U++\bin\clang\include\stdio.h (422): '__format__' attribute argument not supported:
gnu_printf
WARNING: C:\U++\bin\clang\include\stdio.h (450): '__format__' attribute argument not supported:
gnu_printf
WARNING: C:\U++\bin\clang\include\stdio.h (463): '__format__' attribute argument not supported:
gnu_printf
WARNING: C:\U++\bin\clang\include\stdio.h (747): '__format__' attribute argument not supported:
ms_printf
WARNING: C:\U++\bin\clang\include\stdio.h (749): '__format__' attribute argument not supported:
ms_scanf
WARNING: C:\U++\bin\clang\include\stdio.h (753): '__format__' attribute argument not supported:
ms_printf
WARNING: C:\U++\bin\clang\include\stdio.h (774): '__format__' attribute argument not supported:
ms_printf
WARNING: C:\U++\bin\clang\include\stdio.h (776): '__format__' attribute argument not supported:
ms_printf
WARNING: C:\U++\bin\clang\include\stddef.h (414): 'offsetof' macro redefined
NOTE: C:\U++\uppsrc\plugin\png\pngupp.cpp (1): in file included from
C:\U++\uppsrc\plugin\png\pngupp.cpp:1:
NOTE: C:\U++\uppsrc\plugin\png\pngupp.cpp (79): in file included from
C:\U++\uppsrc\plugin\png\pngupp.cpp:79:
NOTE: C:\U++\bin\clang\include\intrin.h (40): in file included from
C:\U++\bin\clang\include\intrin.h:40:
NOTE: C:\U++\bin\clang\lib\clang\14.0.0\include\stddef.h (104): previous definition is here
WARNING: (7): extra tokens at end of #undef directive
WARNING: (8): extra tokens at end of #undef directive
WARNING: (9): extra tokens at end of #undef directive
WARNING: (102): '__stdcall' macro redefined
NOTE: C:\U++\bin\clang\include_mingw.h (34): previous definition is here
WARNING: C:\U++\bin\clang\include\winuser.h (2237): 'dllimport' attribute only applies to
functions, variables, classes, and Objective-C interfaces
NOTE: C:\U++\uppsrc\plugin\png\pngupp.cpp (218): in file included from
C:\U++\uppsrc\plugin\png\pngupp.cpp:218:
NOTE: C:\U++\bin\clang\include\winsock2.h (23): in file included from
C:\U++\bin\clang\include\winsock2.h:23:
NOTE: C:\U++\bin\clang\include\windows.h (72): in file included from
C:\U++\bin\clang\include\windows.h:72:
NOTE: C:\U++\bin\clang\include\apisetconv.h (51): expanded from macro 'WINUSERAPI'
NOTE: C:\U++\bin\clang\include\winnt.h (154): expanded from macro 'DECLSPEC_IMPORT'
ERROR: C:\U++\bin\clang\include\rpcndr.h (75): 'short wchar_t' is invalid
NOTE: C:\U++\uppsrc\plugin\png\pngupp.cpp (218): in file included from
C:\U++\uppsrc\plugin\png\pngupp.cpp:218:
NOTE: C:\U++\bin\clang\include\winsock2.h (23): in file included from
C:\U++\bin\clang\include\winsock2.h:23:
NOTE: C:\U++\bin\clang\include\windows.h (97): in file included from

C:\U++\bin\clang\include\windows.h:97:
NOTE: C:\U++\bin\clang\include\wincard.h (10): in file included from
C:\U++\bin\clang\include\wincard.h:10:
NOTE: C:\U++\bin\clang\include\wtypes.h (8): in file included from
C:\U++\bin\clang\include\wtypes.h:8:
WARNING: C:\U++\bin\clang\include\rpcndr.h (75): typedef requires a name
ERROR: C:\U++\uppsrc\plugin\png\pngupp.cpp (467): expected unqualified-id
NOTE: C:\U++\bin\clang\include\math.h (586): expanded from macro 'isnan'
NOTE: C:\U++\bin\clang\include\math.h (103): expanded from macro '
__mingw_choose_expr'
ERROR: C:\U++\uppsrc\plugin\png\pngupp.cpp (468): expected unqualified-id
NOTE: C:\U++\bin\clang\include\math.h (509): expanded from macro 'isinf'
WARNING: C:\U++\uppsrc\plugin\png\pngupp.cpp (579): using integer absolute value function
'abs' when argument is of floating point type
NOTE: C:\U++\uppsrc\plugin\png\pngupp.cpp (579): use function 'std::abs' instead
NOTE: C:\U++\uppsrc\plugin\png\pngupp.cpp (579): include the header <cmath> or explicitly
provide a declaration for 'std::abs'
ERROR: C:\U++\uppsrc\plugin\png\pngupp.cpp (12): unterminated conditional directive
NOTE: C:\U++\uppsrc\plugin\png\pngupp.cpp (1): in file included from
C:\U++\uppsrc\plugin\png\pngupp.cpp:1:
ERROR: C:\U++\uppsrc\plugin\png\pngupp.cpp (7): unterminated conditional directive
ERROR: C:\U++\uppsrc\plugin\png\pngupp.cpp (742): expected '}'
NOTE: C:\U++\uppsrc\plugin\png\pngupp.cpp (287): to match this '{'

Subject: Re: version 168847 (stable)
Posted by [mirek](#) on Wed, 25 Oct 2023 13:38:24 GMT
[View Forum Message](#) <> [Reply to Message](#)

Weird. I have just downloaded 2023.2 and just loading AddressBook example, defs.h are just fine.

Have you checked with "clean" downloaded version? (If yes, then there must be something different with your overall Win installation, e.g. some CLANG or MINGW compiler separately installed with INCLUDE path or something like that).

Subject: Re: version 168847 (stable)
Posted by [mirek](#) on Wed, 25 Oct 2023 13:40:19 GMT
[View Forum Message](#) <> [Reply to Message](#)

Just a hunch - try to place freshly downloaded U++ into C:/UPP folder (maybe "++" is confusing something)

Mirek

Subject: Re: version 168847 (stable)
Posted by [BetoValle](#) on Wed, 25 Oct 2023 14:44:20 GMT
[View Forum Message](#) <> [Reply to Message](#)

Hi,

in others package this not occur!

after a review in assembler editing there was a reference to the folder "C:\U++\bin\clang\include" which probably blurred all logic! As soon as I removed it, the error in the Core/Defs file disappeared!

This package where the error was displayed was for general testing and for some reason that I don't remember now, what was the reason for directly accessing this folder. Anyway anyway By accessing a "source location", the IDE can add due attention to its "tips"!

Thanks!
