

---

Subject: "Package organizer" and other dialogs are size incorrect in linux  
Posted by [nicomesas](#) on Fri, 15 Sep 2006 16:16:56 GMT

[View Forum Message](#) <> [Reply to Message](#)

---

The size of some dialogs is not the adapted one in Linux.

For example "package organizer" occupies almost all my screen of 1024x768, in such a way that caption is "underneath" of the menu bar of gnome.

The same it happens with almost all the emergent sales of TheIde.

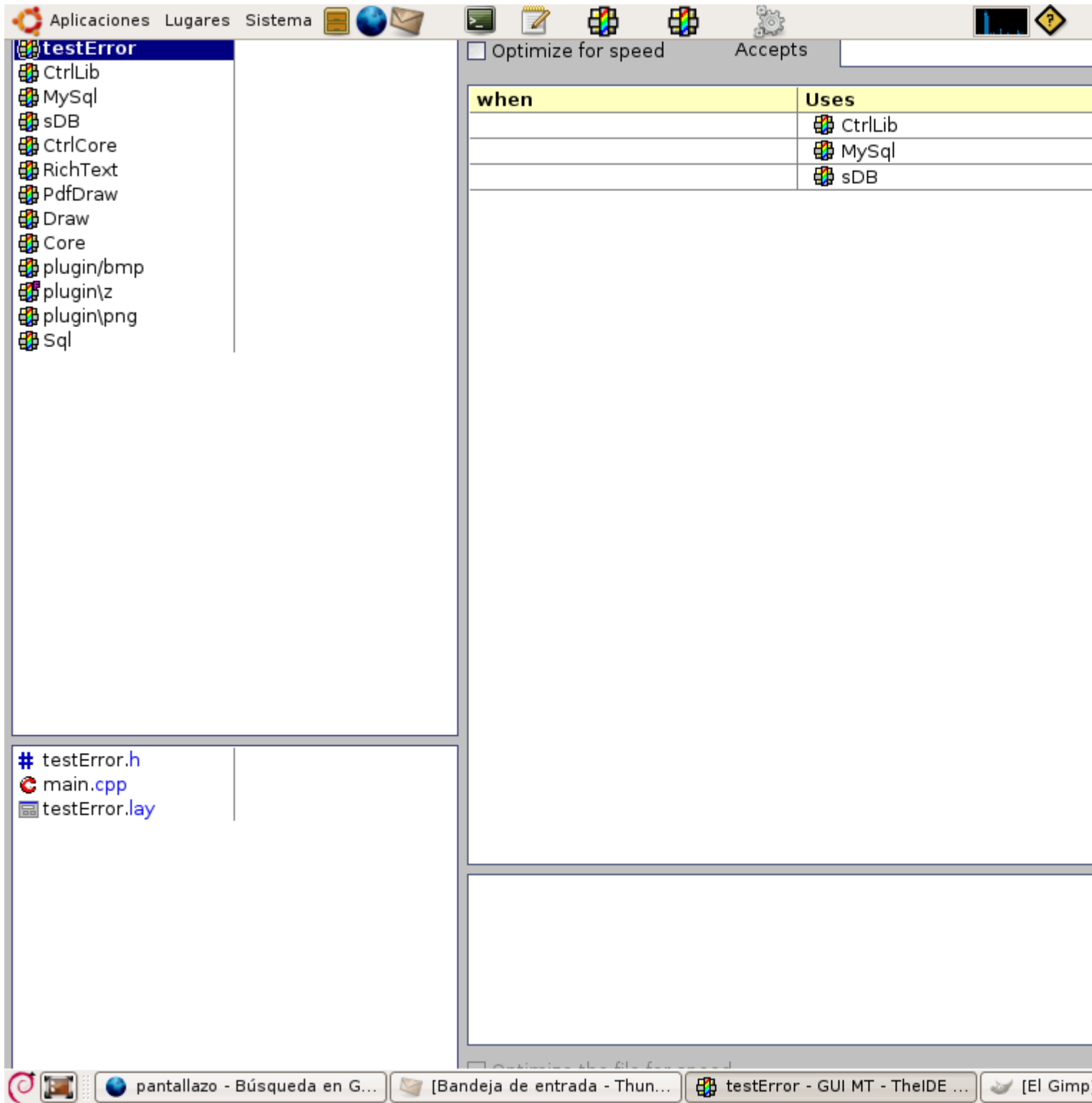
I have test it in Windows but the windows have a reasonable size there.

Nico

### File Attachments

---

1) [Pantallazo.png](#), downloaded 1798 times



---

Subject: Re: "Package organizer" and other dialogs are size incorrect in linux

Posted by [mirek](#) on Fri, 15 Sep 2006 16:19:54 GMT

[View Forum Message](#) <> [Reply to Message](#)

This was discussed a couple of times here already - size of dialog adjust proportionally to the font size.

Anyway, in this case it looks like the "basic" size is too large, something to fix. A list of all "too big" windows in TheIDE would help.

---

---

Subject: Re: "Package organizer" and other dialogs are size incorrect in linux  
Posted by [nicomesas](#) on Fri, 15 Sep 2006 17:09:32 GMT

[View Forum Message](#) <> [Reply to Message](#)

---

"Main package configuration(s)" is too width.

"output mode" is too hight.

"Navigate.." and "Navigate in the file", "Virtual methods" and "This backs" they occupy almost all the screen, but without getting to fill it absolutely, it is left a little badly.

In addition, another thing that seems I have works rare is layout to designer. The horizontal Scroll bar seems that it is not synchronized well with the wide one of the object that we are designing.

I will test if changing the font size sees a little better.

Nico

#### File Attachments

---

1) [screen-shots.zip](#), downloaded 1692 times

---

---

Subject: Re: "Package organizer" and other dialogs are size incorrect in linux  
Posted by [djesus](#) on Sat, 23 Sep 2006 15:20:13 GMT

[View Forum Message](#) <> [Reply to Message](#)

---

Quote:In addition, another thing that seems I have works rare is layout to designer. The horizontal Scroll bar seems that it is not synchronized well with the wide one of the object that we are designing.

I get the same error. I can't work beacuse I can't see where is the objects. In U++ 605 works fine.

Thanks a lot

---

---

Subject: Re: "Package organizer" and other dialogs are size incorrect in linux  
Posted by [mirek](#) on Wed, 11 Oct 2006 05:46:09 GMT

[View Forum Message](#) <> [Reply to Message](#)

---

djesus wrote on Sat, 23 September 2006 11:20Quote:In addition, another thing that seems I have works rare is layout to designer. The horizontal Scroll bar seems that it is not synchronized well with the wide one of the object that we are designing.

I get the same error. I can't work beacuse I can't see where is the objects. In U++ 605 works fine.

---

Thanks a lot

Both should be fixed now.

Mirek

---

---

Subject: Re: "Package organizer" and other dialogs are size incorrect in linux  
Posted by [djesus](#) on Mon, 16 Oct 2006 09:03:54 GMT  
[View Forum Message](#) <> [Reply to Message](#)

---

Now works fine.

You are great!

Thanks a lot

---