
Subject: Copy and Paste changes colors in Icon Edit [BUG]

Posted by [fallingdutch](#) on Sat, 28 Oct 2006 17:32:00 GMT

[View Forum Message](#) <> [Reply to Message](#)

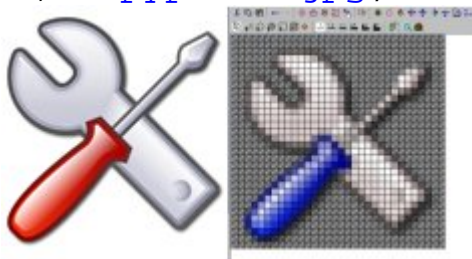
I have opened the following picture with "the gimp" and copied it, then pasted it into the IDE icon editor and the screwbar changed from red to blue ... looks good, too, but wasn't what I expected

Bas

[edit: the format was png, and it happened with other icons, too. It seems like red and blue are always switched]

File Attachments

1) [coppypaste.jpg](#), downloaded 2768 times



Subject: Re: Copy and Paste changes colors in Icon Edit [BUG]

Posted by [mirek](#) on Wed, 01 Nov 2006 08:53:20 GMT

[View Forum Message](#) <> [Reply to Message](#)

Interesting.

Are other colors in TheIDE icons ok?

If so, even more interesting... The format used to pass images through clipboard is (surprisingly) .bmp first and .png if .bmp is not available.

Maybe in 64-bits there is some problem with RGBA structure...

Mirek

Subject: Re: Copy and Paste changes colors in Icon Edit [BUG]

Posted by [fallingdutch](#) on Wed, 01 Nov 2006 09:15:13 GMT

[View Forum Message](#) <> [Reply to Message](#)

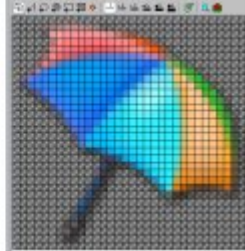
found another nice icon with all colors: green seems to be ok, only the red and blue channels

seem to be switched

Bas

File Attachments

1) [coppaste2.jpg](#), downloaded 2764 times



Subject: Re: Copy and Paste changes colors in Icon Edit [BUG]

Posted by [mirek](#) on Wed, 01 Nov 2006 09:19:28 GMT

[View Forum Message](#) <> [Reply to Message](#)

Sure, that is obvious.

The question is when switching happens.

It can be in Draw or it can be in .bmp routines or in .png routines....

BTW, are "small" icon previes OK?

Or something else - could you please post complete screenshot so I can check more? This one is too small....

Mirek

Subject: Re: Copy and Paste changes colors in Icon Edit [BUG]

Posted by [fallingdutch](#) on Wed, 01 Nov 2006 09:34:41 GMT

[View Forum Message](#) <> [Reply to Message](#)

the preview is wrong, too

just have a look at the new (complete) screenshot

Bas

File Attachments

1) [coppaste3.jpg](#), downloaded 1471 times

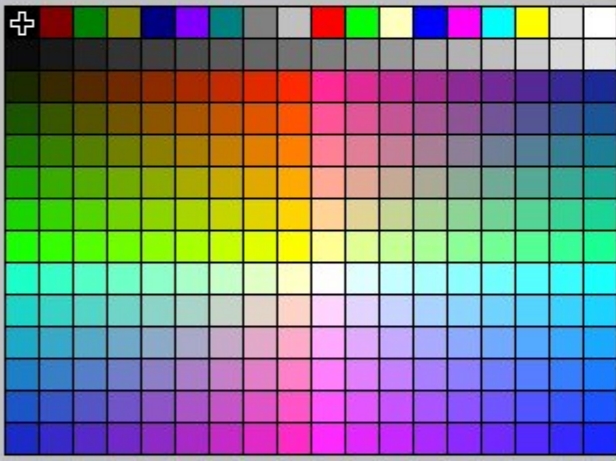
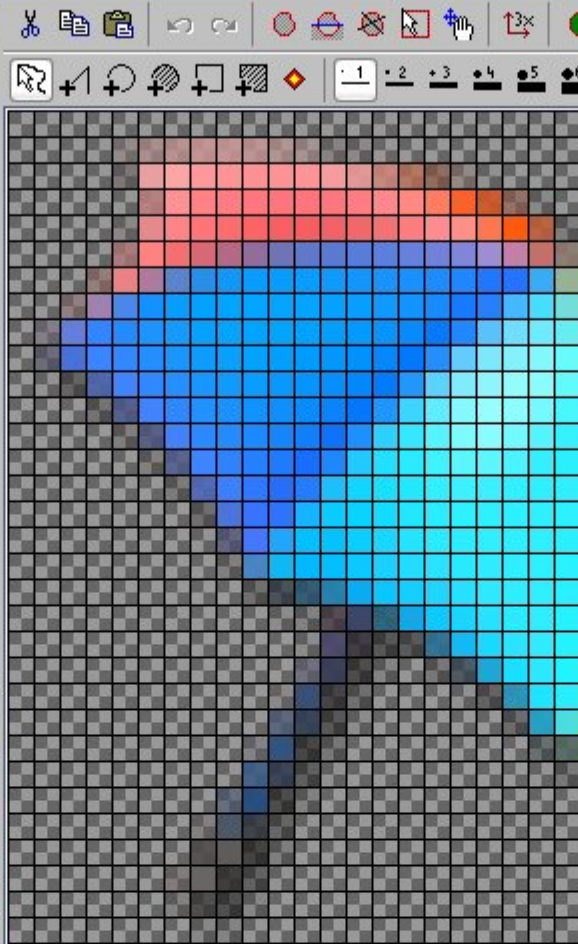
File Edit Project Build Debug Assist Setup

GCC64_34 D

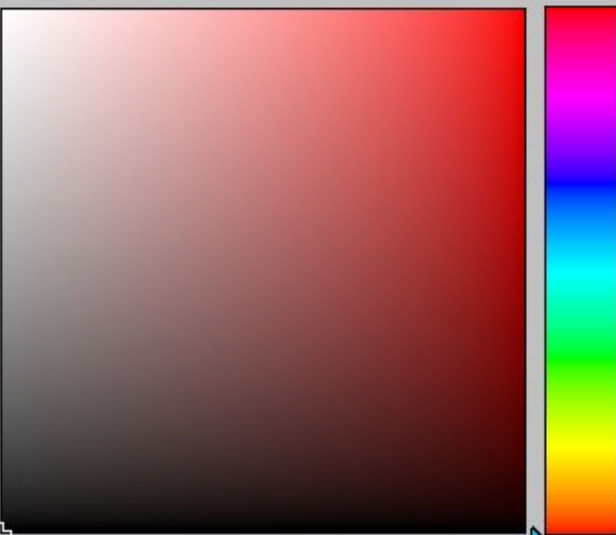
ImageTest
<prj-aux>
<ide-aux>
<temp-aux>

Test.iml

color (32 x 32)



RGBA(0, 0, 0, 255)



Subject: Re: Copy and Paste changes colors in Icon Edit [BUG]

Posted by [mirek](#) on Wed, 01 Nov 2006 09:56:01 GMT

[View Forum Message](#) <> [Reply to Message](#)

fallingdutch wrote on Wed, 01 November 2006 04:34the preview is wrong, too

just have a look at the new (complete) screenshot

Bas

OK, all colors seem to be correct EXCEPT for that pasted icon.

Therefore definitely looks like the bug in .bmp or .png decoder.

It would be interesting to find out which one

Could you please build debug version of ide and place some LOGs to ReadClipboardImage (CtrlCore/X11ImgClip.cpp) to find out whether it is .bmp or .png?

Are you running 32 bit or 64 bit ide?

Mirek

Subject: Re: Copy and Paste changes colors in Icon Edit [BUG]

Posted by [fallingdutch](#) on Wed, 01 Nov 2006 10:38:11 GMT

[View Forum Message](#) <> [Reply to Message](#)

luzr wrote on Wed, 01 November 2006 10:56

Could you please build debug version of ide and place some LOGs to ReadClipboardImage (CtrlCore/X11ImgClip.cpp) to find out whether it is .bmp or .png?

When doing so my ide crashes with a heap error at the moment, that could be the Problem i found somewhere in the forum when using two iml files:

<http://www.arilect.com/upp/forum/index.php?t=msg&th=1617 &start=0&>

* ide 01.11.2006 12:33:22, user: bas

GetProperty

XAtomName(property) = _NET_SUPPORTED

X Error: BadAtom (invalid Atom parameter), request: X_GetAtomName, resource id: 0 = 0

XAtomName(rtype) =

rsize = 65435

format = 32

type = 4

after = 0

nitems = 25


```
XAtomName(rtype) =
rsize = 65435
format = 0
type = 0
after = 0
nitems = 0
GetProperty
XAtomName(property) = _NET_FRAME_EXTENTS
X Error: BadAtom (invalid Atom parameter), request: X_GetAtomName, resource id: 0 = 0
XAtomName(rtype) =
rsize = 65435
format = 0
type = 0
after = 0
nitems = 0
```

Heap is corrupted

```
MemoryWatchFree(0x0x2aaaac3bed30);
```

Memory at 0x2AAAAC3BED30, size 0x240 = 576

```
+0 0x00002AAAAC3BED30 00 00 00 00 00 00 00 00 00 00 00 00 00 00 00 00 .....
+16 0x00002AAAAC3BED40 00 00 00 00 00 00 00 00 00 00 00 00 00 00 00 00 .....
```

```
Heap is corrupted
strerror_r(0, 1024) -> errno = 0
strerror_r(0, 1024) -> errno = 0
```

Will complete recompile to test again, in release mode, too

luzr wrote on Wed, 01 November 2006 10:56
Are you running 32 bit or 64 bit ide?

64 bit

Bas

Subject: Re: Copy and Paste changes colors in Icon Edit [BUG]
Posted by [fallingdutch](#) on Wed, 01 Nov 2006 11:00:24 GMT
[View Forum Message](#) <> [Reply to Message](#)

Icon Designer works in release mode, but i am unable to work with it in debug mode - crashes each time with a heap error
* ide 01.11.2006 13:05:18, user: bas

```
GetProperty
XAtomName(property) = _NET_SUPPORTED
X Error: BadAtom (invalid Atom parameter), request: X_GetAtomName, resource id: 0 = 0
XAtomName(rtype) =
rsize = 65435
format = 32
type = 4
after = 0
nitems = 25
GetProperty
XAtomName(property) = _NET_WORKAREA
X Error: BadAtom (invalid Atom parameter), request: X_GetAtomName, resource id: 0 = 0
XAtomName(rtype) =
rsize = 65435
format = 32
type = 6
after = 0
nitems = 24
GetProperty
XAtomName(property) = _NET_FRAME_EXTENTS
X Error: BadAtom (invalid Atom parameter), request: X_GetAtomName, resource id: 0 = 0
XAtomName(rtype) =
rsize = 65435
format = 0
type = 0
after = 0
nitems = 0
GetProperty
XAtomName(property) = _NET_FRAME_EXTENTS
X Error: BadAtom (invalid Atom parameter), request: X_GetAtomName, resource id: 0 = 0
XAtomName(rtype) =
rsize = 65435
format = 0
type = 0
after = 0
nitems = 0
GetProperty
XAtomName(property) = _NET_FRAME_EXTENTS
X Error: BadAtom (invalid Atom parameter), request: X_GetAtomName, resource id: 0 = 0
XAtomName(rtype) =
rsize = 65435
format = 0
type = 0
after = 0
nitems = 0
GetProperty
XAtomName(property) = _NET_FRAME_EXTENTS
X Error: BadAtom (invalid Atom parameter), request: X_GetAtomName, resource id: 0 = 0
XAtomName(rtype) =
rsize = 65435
format = 0
type = 0
after = 0
nitems = 0
GetProperty
XAtomName(property) = _NET_FRAME_EXTENTS
X Error: BadAtom (invalid Atom parameter), request: X_GetAtomName, resource id: 0 = 0
XAtomName(rtype) =
rsize = 65435
format = 0
type = 0
after = 0
nitems = 0
```

XAtomName(rtype) =
rsize = 65435
format = 0
type = 0
after = 0
nitems = 0

Heap is corrupted

MemoryWatchFree(0x0x2aaaac98fd30);

Memory at 0x2AAAAC98FD30, size 0x240 = 576

```
+0 0x00002AAAAC98FD30 00 00 00 00 00 00 00 00 00 00 00 00 00 00 00 00 .....  
+16 0x00002AAAAC98FD40 00 00 00 00 00 00 00 00 00 00 00 00 00 00 00 00 .....
```

Heap is corrupted

Subject: Re: Copy and Paste changes colors in Icon Edit [BUG]

Posted by [mirek](#) on Wed, 01 Nov 2006 11:20:33 GMT

[View Forum Message](#) <> [Reply to Message](#)

Just an idea, recently we accidentally found a bug that most likely blows 64-bits.

Please check in Draw/RasterEncoder:

```
void RasterEncoder::WriteLine(const RGBA *s)  
{  
    memcpy(line, s, size.cx * sizeof(RGBA));  
    WriteLine();  
}
```

Buggy version is with "sizeof(s)" (typo), which unfortunately works in 32 bits, but not in 64...

Mirek

Subject: Re: Copy and Paste changes colors in Icon Edit [BUG]

Posted by [fallingdutch](#) on Wed, 01 Nov 2006 12:04:42 GMT

[View Forum Message](#) <> [Reply to Message](#)

yes, had the version with sizeof(s) - changed it and debug mode works now.
strange is: it works in release mode with the bug ...

The format was PNG.

Bas

Subject: Re: Copy and Paste changes colors in Icon Edit [BUG]

Posted by [mirek](#) on Wed, 01 Nov 2006 12:27:37 GMT

[View Forum Message](#) <> [Reply to Message](#)

fallingdutch wrote on Wed, 01 November 2006 07:04: yes, had the version with sizeof(s) - changed it and debug mode works now.

strange is: it works in release mode with the bug ...

The format was PNG.

Bas

Well, in release heap corruption is not tested...

Mirek

Subject: Re: Copy and Paste changes colors in Icon Edit [BUG]

Posted by [fallingdutch](#) on Wed, 01 Nov 2006 13:00:01 GMT

[View Forum Message](#) <> [Reply to Message](#)

but the image is still not pasted correctly

Bas

Subject: Re: Copy and Paste changes colors in Icon Edit [BUG]

Posted by [mirek](#) on Wed, 01 Nov 2006 18:35:50 GMT

[View Forum Message](#) <> [Reply to Message](#)

Downloading suse 64bit now

Mirek

Subject: Re: Copy and Paste changes colors in Icon Edit [BUG]

Posted by [fallingdutch](#) on Wed, 01 Nov 2006 19:18:35 GMT

[View Forum Message](#) <> [Reply to Message](#)

thanks a lot, Mirek

that is what you call SUPPORT!

Bas

Subject: Re: Copy and Paste changes colors in Icon Edit [BUG]

Posted by [mirek](#) on Wed, 01 Nov 2006 19:27:09 GMT

[View Forum Message](#) <> [Reply to Message](#)

fallingdutch wrote on Wed, 01 November 2006 14:18thanks a lot, Mirek

that is what you call SUPPORT!

Bas

Actually, do not stop complaining please!

(there is a lot going on now, chances I forget about this problem are high...)

Mirek

Subject: Re: Copy and Paste changes colors in Icon Edit [BUG]

Posted by [fallingdutch](#) on Thu, 02 Nov 2006 06:49:30 GMT

[View Forum Message](#) <> [Reply to Message](#)

luzr wrote on Wed, 01 November 2006 20:27

Actually, do not stop complaining please!

I won't, Mirek I won't

Bas

Subject: Re: Copy and Paste changes colors in Icon Edit [BUG]

Posted by [mirek](#) on Sat, 04 Nov 2006 19:19:01 GMT

[View Forum Message](#) <> [Reply to Message](#)

Fixed.

Mirek

Subject: Re: Copy and Paste changes colors in Icon Edit [BUG]

Posted by [fallingdutch](#) on Sat, 04 Nov 2006 23:17:51 GMT

[View Forum Message](#) <> [Reply to Message](#)

luzr wrote on Sat, 04 November 2006 20:19Fixed.

Mirek

thanks Mirek, sounds like a "recopy and paste all of your icons"

can you give me a patch or how will i get it? next dev-version?

Bas

Subject: Re: Copy and Paste changes colors in Icon Edit [BUG]

Posted by [mirek](#) on Sun, 05 Nov 2006 05:13:48 GMT

[View Forum Message](#) <> [Reply to Message](#)

dev release will be today or tommorow... As there is one critical other problem fixed, I strongly recommend to download it...

If you want it even faster, in Draw/RasterFormat.cpp, remove LINUX versions of SetRGBA and IsRGBA method and make WIN32 the only one valid.

Mirek
