
Subject: Layout-editor switches to text-editor when starting debug
[BUG][INTENTIONAL]

Posted by [zsolt](#) on Wed, 22 Feb 2006 23:11:04 GMT

[View Forum Message](#) <> [Reply to Message](#)

I don't know if is it a feature or a bug, but I don't know how to swich it back to layout editor.
I have to restart IDE to get the layout-editor back.

Subject: Re: Layout-editor switches to text-editor when starting debug

Posted by [mirek](#) on Thu, 23 Feb 2006 14:49:36 GMT

[View Forum Message](#) <> [Reply to Message](#)

It is a feature - in fact, .lay is by C++ compiler interpreted as the code and sometimes it is good to be able to trace through it.

There is "Edit as text"/"Edit using designer" item in the "Edit" menu (Ctrl+T).

Mirek

Subject: Re: Layout-editor switches to text-editor when starting debug

Posted by [zsolt](#) on Thu, 23 Feb 2006 15:27:58 GMT

[View Forum Message](#) <> [Reply to Message](#)

Thanks a lot!

I think, there is some problem with my eyes

Subject: Re: Layout-editor switches to text-editor when starting debug

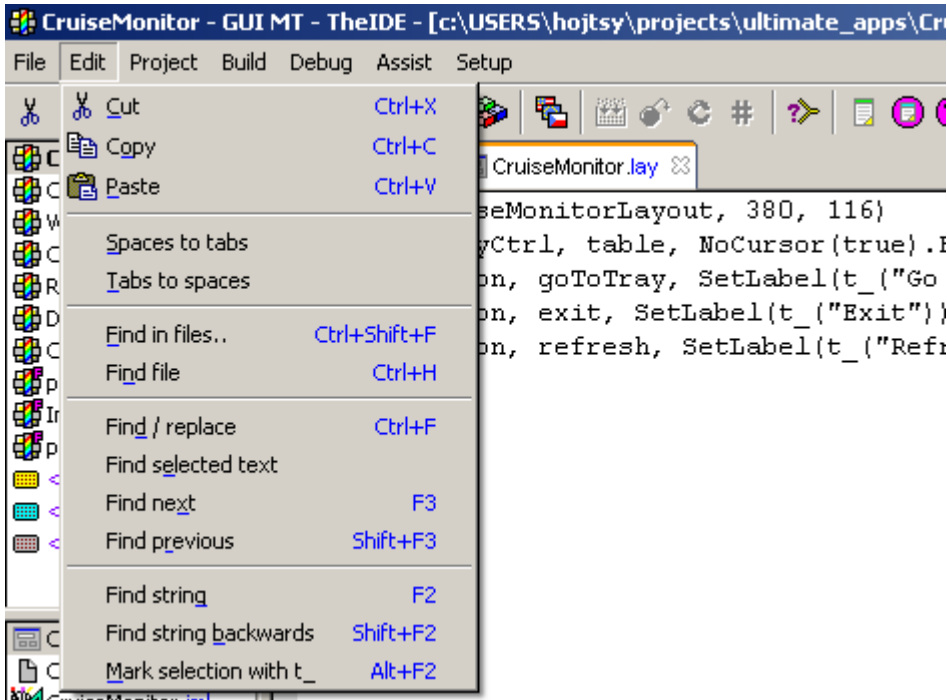
Posted by [hojtsy](#) on Mon, 20 Mar 2006 08:26:44 GMT

[View Forum Message](#) <> [Reply to Message](#)

The same thing happens with .iml files, they switch to text view in debugging. And I am having a problem with switching back to designer view. When the debugger is running I either don't have "Edit in designer (Ctrl-T)" in the Edit menu, or I have but it doesn't do anything. I am running 603-dev1 version.

File Attachments

1) [upp_edit_menu.png](#), downloaded 2708 times



Subject: Re: Layout-editor switches to text-editor when starting debug

Posted by [mirek](#) on Mon, 20 Mar 2006 08:37:45 GMT

[View Forum Message](#) <> [Reply to Message](#)

hojtsy wrote on Mon, 20 March 2006 03:26 The same thing happens with .iml files, they switch to text view in debugging. And I am having a problem with switching back to designer view. When the debugger is running I either don't have "Edit in designer (Ctrl-T)" in the Edit menu, or I have but it doesn't do anything. I am running 603-dev1 version.

This is deliberate. Both .iml and .lay are C++ code that can be traced.

In other words, if debugger traces the code down to .lay or .iml, how would you expect to show the current location in graphical designer?

Mirek

Subject: Re: Layout-editor switches to text-editor when starting debug

Posted by [hojtsy](#) on Mon, 20 Mar 2006 09:30:23 GMT

[View Forum Message](#) <> [Reply to Message](#)

Then there is still the bug that "Edit in designer" menu item is shown sometimes during debugging. See this screenshot with debugger running (app icon shows debugger). Clicking the menu item doesn't do anything visible, but if you click it, it is not shown anymore even if you stop debugging. You need to close & reopen the file to see this menu item again.

How about delaying the view switching until the text view is needed for debugger? I rarely trace into image files

File Attachments

1) [upp_edit_menu2.png](#), downloaded 2608 times

