
Subject: PDF Export With Chinese Character[SOLVED]

Posted by [kasome](#) on Sat, 15 Aug 2009 13:35:18 GMT

[View Forum Message](#) <> [Reply to Message](#)

I try to use Report package to export pdf file with Chinese character, and here is the content of my test case.

```
#include <Report/Report.h>

using namespace Upp;

GUI_APP_MAIN
{
    Report r;
    r.Header("[A2> Page $$P");
    r << "This is some [* QTF text";

    r << "&&Let's report some table:";

    String tab;
    tab << "{{1:1:1:1:1:1:2 A:: B:: C:: D:: E:: F:: G (wider)";
    for(int row = 0; row < 20; row++)
        for(int column = 0; column < 7; column++)

    r << tab;

    r.NewPage();
    int y = r.GetY();
    r.DrawEllipse(300, y + 50, 3000, 2000, LtRed, 20);
    r.DrawText(500, y + 50 + 950, "Some free drawing in this page!", Arial(100));

    r.SetY(y + 50 + 3000);
    r << "More of [/ QTF] [C6* text";

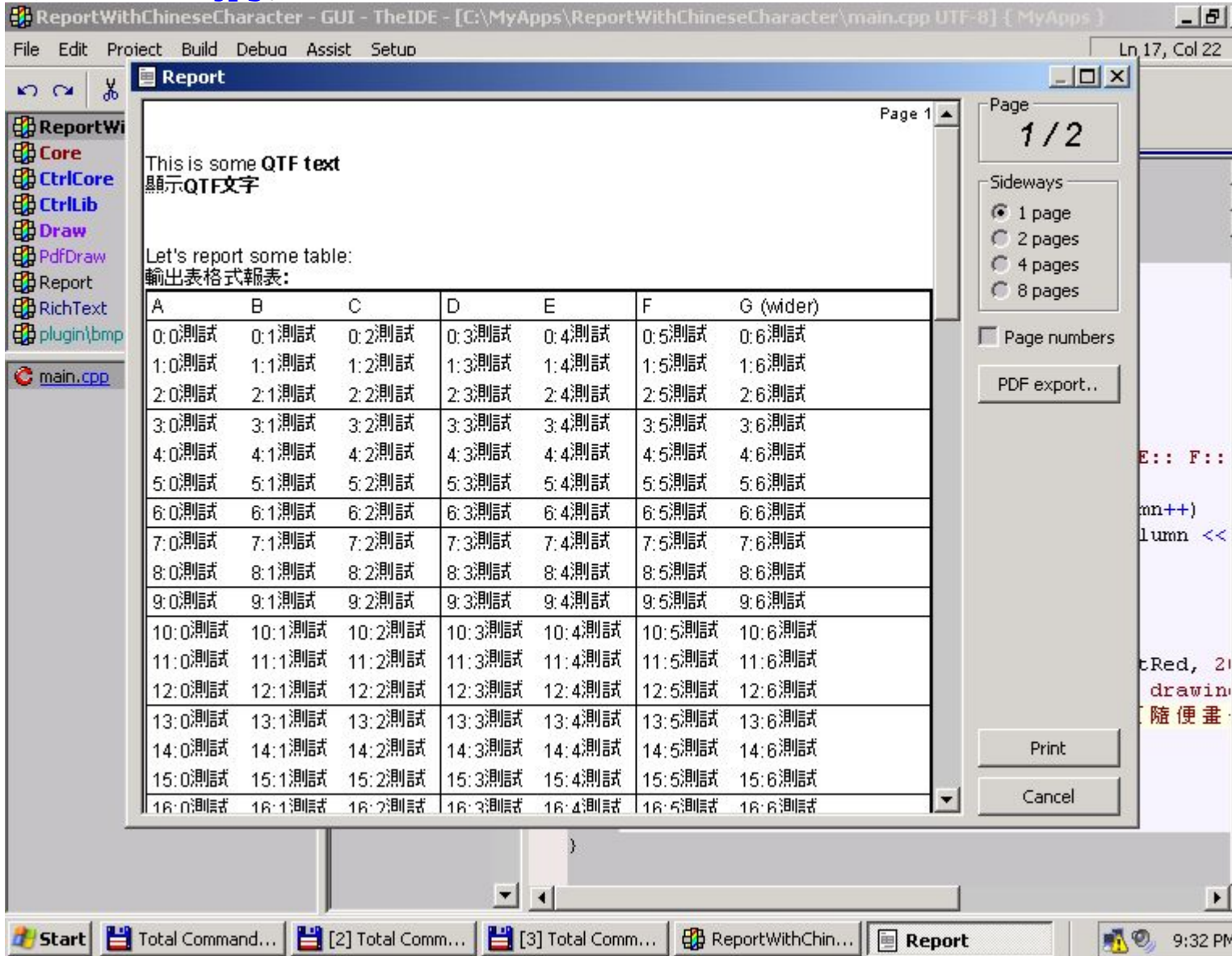
    Perform(r);
}
```

The Report package works no problem on Chinese character, but when i push the "PDF export.." Button,it outputs an empty pdf file and with the file size 0kb.

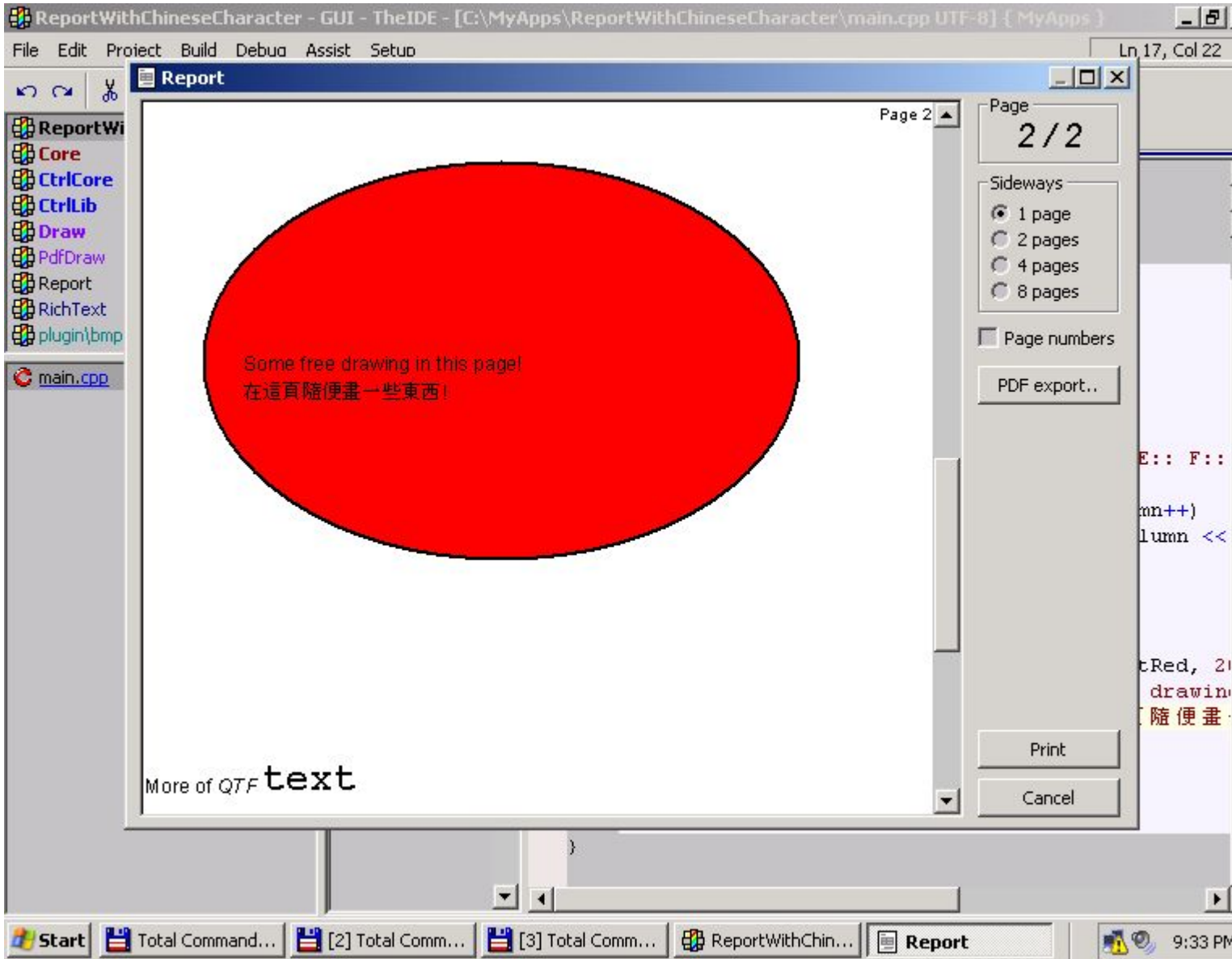
I already put the test case as file Attachments,could someone help?

File Attachments

1) [testPic.jpg](#), downloaded 1437 times



2) [testPic2.jpg](#), downloaded 1440 times



3) [ReportWithChineseCharacter.rar](#), downloaded 564 times

Subject: Re: PDF Export With Chinese Character
Posted by [mirek](#) on Mon, 17 Aug 2009 18:36:36 GMT
[View Forum Message](#) <> [Reply to Message](#)

Well, it works for me.

Anyway, there is a tricky problem with your testcase. PdfDraw package is only included conditionally by Draw and (as it was in my case), it does not really gets included into Report.

I have to admit I am surprised that you have the PDF Export button in Report - I did not.

After fixing this issue, everything works as expected.

Mirek

Subject: Re: PDF Export With Chinese Character
Posted by [kasome](#) on Sat, 22 Aug 2009 07:34:51 GMT
[View Forum Message](#) <> [Reply to Message](#)

I see. Thanks, Mirek.

Subject: Re: PDF Export With Chinese Character
Posted by [kasome](#) on Sat, 29 Aug 2009 16:11:18 GMT
[View Forum Message](#) <> [Reply to Message](#)

Sorry to bother you again.

After adding PdfDraw into Report, now i can export the pdf file correctly.

But i found it will be fail to export pdf file on some computer without installing the font "Arial Unicode MS", so i have to install the font "Arial Unicode MS" on these computers to make it work.

Is there better way?

You can test just by backup the file of the font "Arial Unicode MS" (e.g.ARIALUNI.TTF) first, and then delete it to see whether or not to export pdf file correctly?

ps: My OS is Windows XP SP2.

Subject: Re: PDF Export With Chinese Character
Posted by [mirek](#) on Sat, 05 Sep 2009 06:35:00 GMT
[View Forum Message](#) <> [Reply to Message](#)

kasome wrote on Sat, 29 August 2009 12:11 Sorry to bother you again.

After adding PdfDraw into Report, now i can export the pdf file correctly.

But i found it will be fail to export pdf file on some computer without installing the font "Arial Unicode MS", so i have to install the font "Arial Unicode MS" on these computers to make it work.

Is there better way?

You can test just by backup the file of the font "Arial Unicode MS" (e.g.ARIALUNI.TTF) first, and then delete it to see whether or not to export pdf file correctly?

ps: My OS is Windows XP SP2.

Well, Arial Unicode contains chinese glyphs, that is why it was chosen as replacement font. I was not really aware that it is not widely supported.

Remedy is quite simple: In Draw/FontCR.cpp there is

sFontReplacements

table. What we need is to identify some fonts on computers without Arial Unicode that contain glyphs you need.

One problem: Adding too many fonts into the table makes things slow (OTOH, adding fonts that are not present on computer is not a problem).

Mirek

Subject: Re: PDF Export With Chinese Character
Posted by [mirek](#) on Sat, 05 Sep 2009 06:36:43 GMT
[View Forum Message](#) <> [Reply to Message](#)

luzr wrote on Sat, 05 September 2009 02:35kasome wrote on Sat, 29 August 2009 12:11Sorry to bother you again.

After adding PdfDraw into Report, now i can export the pdf file correctly.

But i found it will be fail to export pdf file on some computer without installing the font "Arial Unicode MS", so i have to install the font "Arial Unicode MS" on these computers to make it work.

Is there better way?

You can test just by backup the file of the font "Arial Unicode MS" (e.g.ARIALUNI.TTF) first, and then delete it to see whether or not to export pdf file correctly?

ps: My OS is Windows XP SP2.

Well, Arial Unicode contains chinese glyphs, that is why it was chosen as replacement font. I was not really aware that it is not widely supported.

Remedy is quite simple: In Draw/FontCR.cpp there is

sFontReplacements

(Of course, after you do, post it here as patch...

Subject: Re: PDF Export With Chinese Character[SOLVED]

Posted by [bubo](#) on Mon, 12 Jul 2010 12:16:49 GMT

[View Forum Message](#) <> [Reply to Message](#)

Can be such font inserted (and used) to resulting pdf file?

Subject: Re: PDF Export With Chinese Character[SOLVED]

Posted by [mirek](#) on Sat, 17 Jul 2010 08:00:03 GMT

[View Forum Message](#) <> [Reply to Message](#)

bubo wrote on Mon, 12 July 2010 08:16Can be such font inserted (and used) to resulting pdf file?

All used fonts (or more specifically, individual glyphs) are always embedded into resulting pdf by default.
