
Subject: bug: FileSel Show folders as programs
Posted by [tojocky](#) on Fri, 15 Jan 2010 12:17:20 GMT
[View Forum Message](#) <> [Reply to Message](#)

Hello Mirek!

After I compiled the latest svn source code i have the following problem:
File select show folders (mounted from network) as programs.
Incorect show:

And how must to be:

I mounted the location in /etc/fstab with this code:

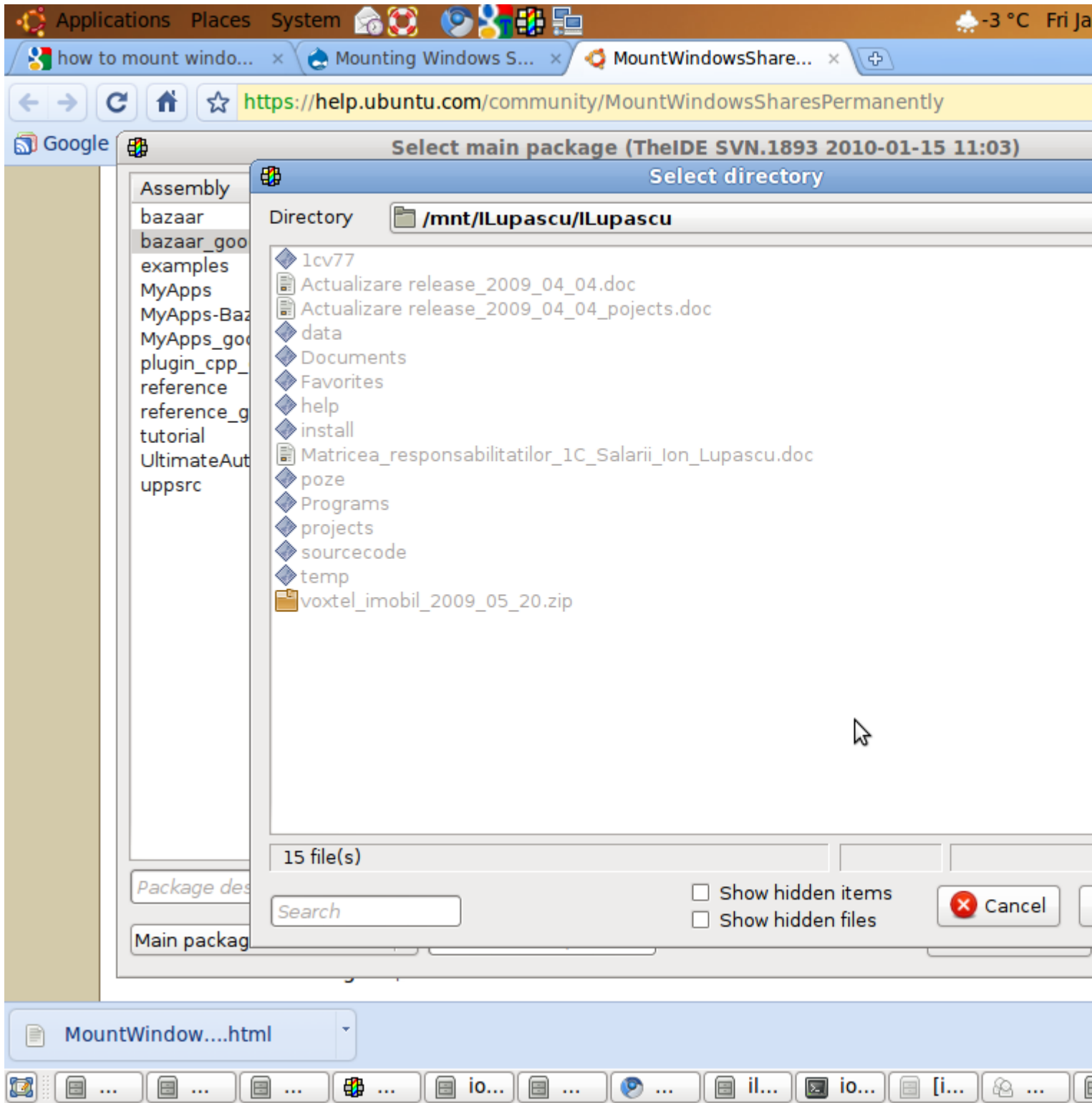
Quote:

```
//192.168.24.1/d$ /mnt/lLupascuComp cifs  
iocharset=utf8,credentials=/etc/cifspw123,dir_mode=0775,gid= 121 0 0
```

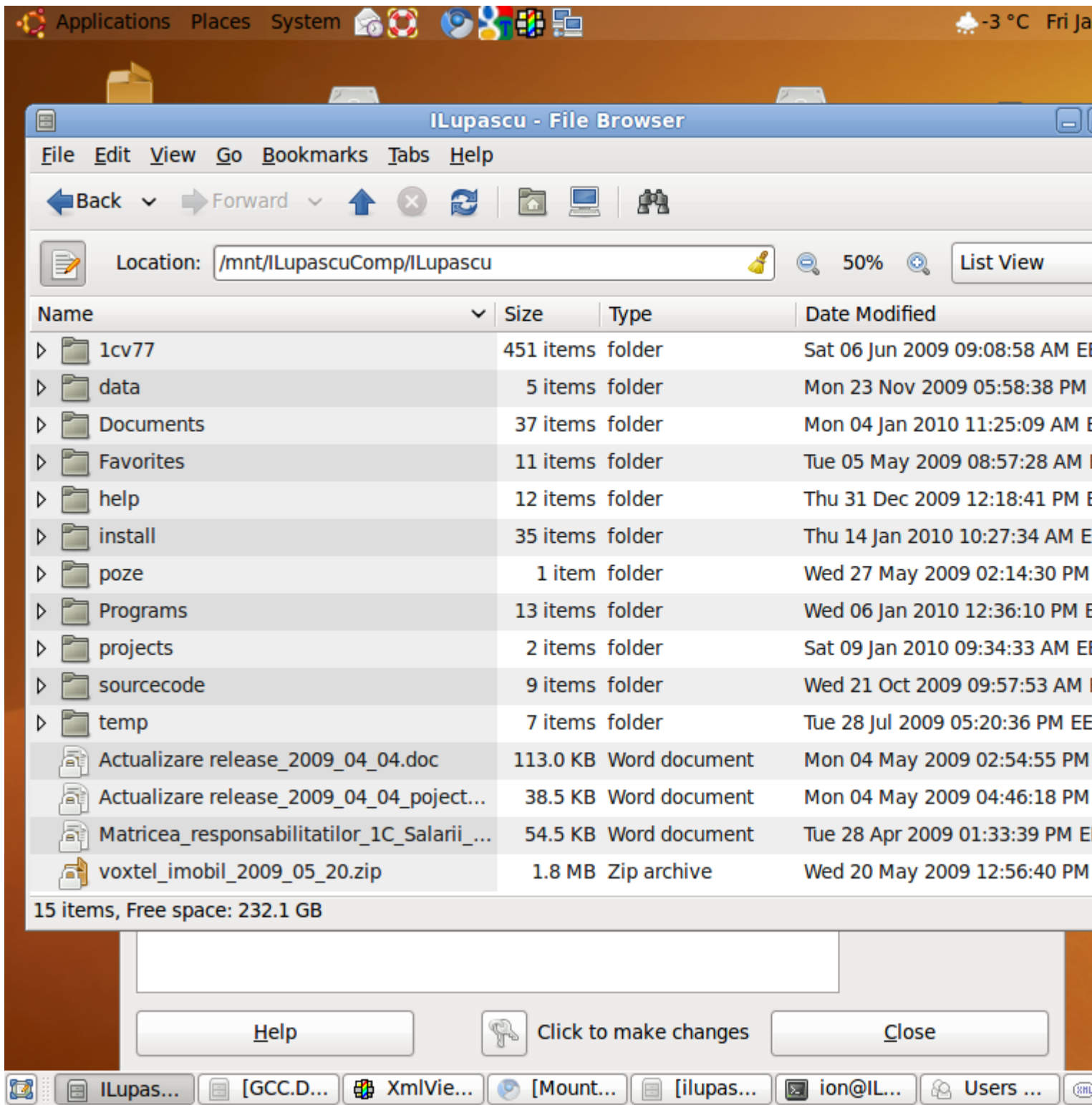
Regards,
Ion Lupascu (tojocky).

File Attachments

1) [UPP_BUG_FILE_SYSTEM.png](#), downloaded 1039 times



2) [correct_file.png](#), downloaded 994 times



Subject: Re: bug: FileSel Show folders as programs
Posted by [tojocky](#) on Mon, 18 Jan 2010 14:20:27 GMT
[View Forum Message](#) <> [Reply to Message](#)

Hello Mirek,

I found the bug:
Please change the following code:

in file "uppsrc/Core/Path.cpp" start with line 585 change method struct stat& FindFile::Stat() const for linux:

```
struct stat& FindFile::Stat() const {
    if(!statis) {
        statis = true;
        if(file){
            // >>> IonLupascu(tojocky) 2009.01.18: Add function ToSystemCharset
            int l_ret = stat(ToSystemCharset(AppendFileName(path, name)), &staf);
            // <<< IonLupascu(tojocky) 2009.01.18
        }
    }
    return staf;
}
```

In file uppsrc/Core/Core.h start with line 50 (after line "#if defined(PLATFORM_POSIX)") add following code

```
//>>> IonLupascu (tojocky) 2009.01.18: Add define __USE_FILE_OFFSET64. it is need for large
files (>2GB)
#ifndef __USE_FILE_OFFSET64
#define __USE_FILE_OFFSET64
#endif
//<<< IonLupascu (tojocky) 2009.01.18
```

Regards,
Ion Lupascu (tojocky)

Add: I have attached the patch of this "bug"!

tojocky wrote on Fri, 15 January 2010 14:17Hello Mirek!

After I compiled the latest svn source code i have the following problem:
File select show folders (mounted from network) as programs.
Incorect show:

And how must to be:

I mounted the location in /etc/fstab with this code:

Quote:

```
//192.168.24.1/d$ /mnt/ILupascuComp cifs  
iocharset=utf8,credentials=/etc/cifspw123,dir_mode=0775,gid= 121 0 0
```

Regards,
Ion Lupascu (tojocky).

File Attachments

1) [linux_file_sel_patch.patch](#), downloaded 731 times
