
Subject: TimberStruct - Timber Structural analysis application

Posted by [mdelfede](#) on Mon, 30 Aug 2010 09:25:01 GMT

[View Forum Message](#) <> [Reply to Message](#)

Well... finally it's showing out. Still missing something, but I use already on my job and it'll be for sale in about a month.

For now, you can download the demo here :

Windows :

<http://www.timberstruct.it/TimberInst.exe>

Ubuntu 64 bit :

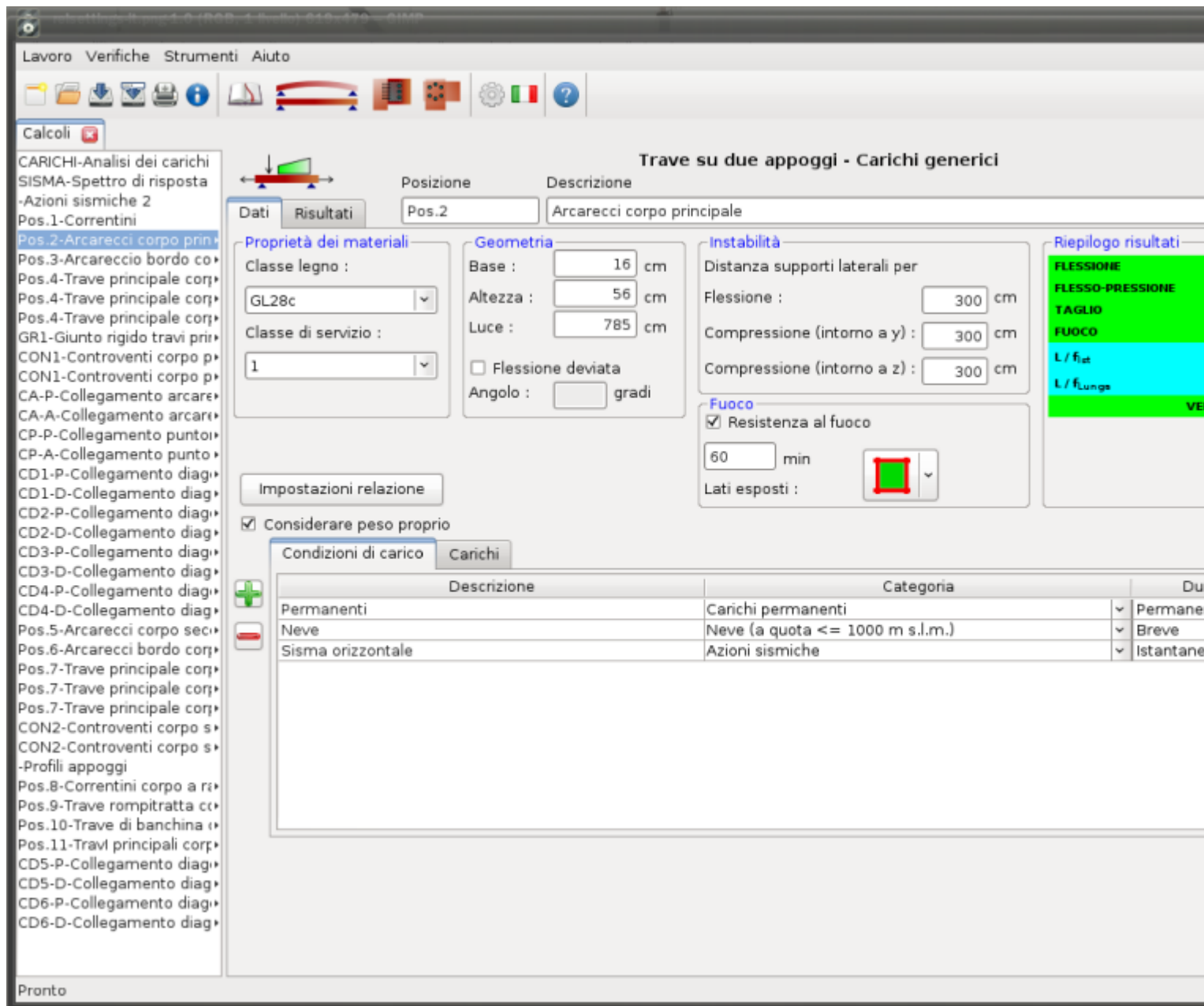
<http://www.timberstruct.it/TimberInst64>

Sorry, no Ubuntu32 by now, app is (by now) dual language, Italian and English (help still just in Italian, sorry)

Here a screenshot :

File Attachments

1) [Beam2SupporteGenericLoad\\$it-it_1.png](#), downloaded 1544 times



Subject: Re: TimberStruct - Timber Structural analysis application

Posted by [mdelfede](#) on Mon, 30 Aug 2010 09:26:26 GMT

[View Forum Message](#) <> [Reply to Message](#)

Another screenshot :

File Attachments

1) [curpage\\$it-it_1.png](#), downloaded 1492 times

Lavoro Verifiche Strumenti Aiuto

Calcoli Manual-IT

GR1-Giunto rigido
GR2-Giunto rigido
Pos.1-Trave continua
Pos.-Trave

Trave continua - Carichi generici

Posizione Descrizione
Pos Trave

TimberStruct -- Calcoli strutture in legno -- www.timberstruct.it

Pos. - Trave

Geometria
Base = 14.00 cm larghezza trave
Altezza = 32.00 cm altezza trave

Materiali
Legno lamellare incollato (EN 14080) Classe GL24c

Classe di servizio : 1

Condizioni di carico

Descrizione	Categoria	Durata	Gruppo
Permanenti	Carichi permanenti	Permanente	
Neve	Neve (a quota <= 1000 m s.l.m.)	Breve	

Analisi dei carichi

Condizione	Tipo carico	x1	Val1	x2	Val2
Permanenti			2.00 KN/m		5.00 KN/m
Neve		100.00 cm	4.00 KN/m	700.00 cm	7.00 KN/m

Reazioni vincolari -- Valori caratteristici

Condizione di carico : Permanenti

R1	12.582 KN
R2	18.502 KN
R3	12.665 KN

Condizione di carico : Neve

R1	17.901 KN
R2	20.298 KN
R3	-5.199 KN

Condizione di carico : Peso proprio

R1	0.755 KN
R2	0.776 KN
R3	0.389 KN

Calcolo per carichi permanenti

$K_{Mod} = 0.60$

Flessione

Combinazione più sfavorevole : 1.3-Permanenti

$M_d = -12.1841 \text{ KN}\cdot\text{m}$

$\sigma_{ed} = 5.10 \text{ N/mm}^2$

$f_{red} = f_{red} \cdot K_{Mod} / \gamma_{Rk} = 9.93 \text{ N/mm}^2$

$\sigma_{ed} \leq f_{red}$ VERIFICATO

Instabilità flessio-torsionale

$l_{ef} = 540.00 \text{ cm}$

$\sigma_{e,inst} = 0.78 \cdot \text{base}^2 / (\text{altezza} \cdot l_{ef}) \cdot E_k = 83.16 \text{ N/mm}^2$

$\lambda_{rel} = 0.54$

Pronto

Subject: Re: TimberStruct - Timber Structural analysis application

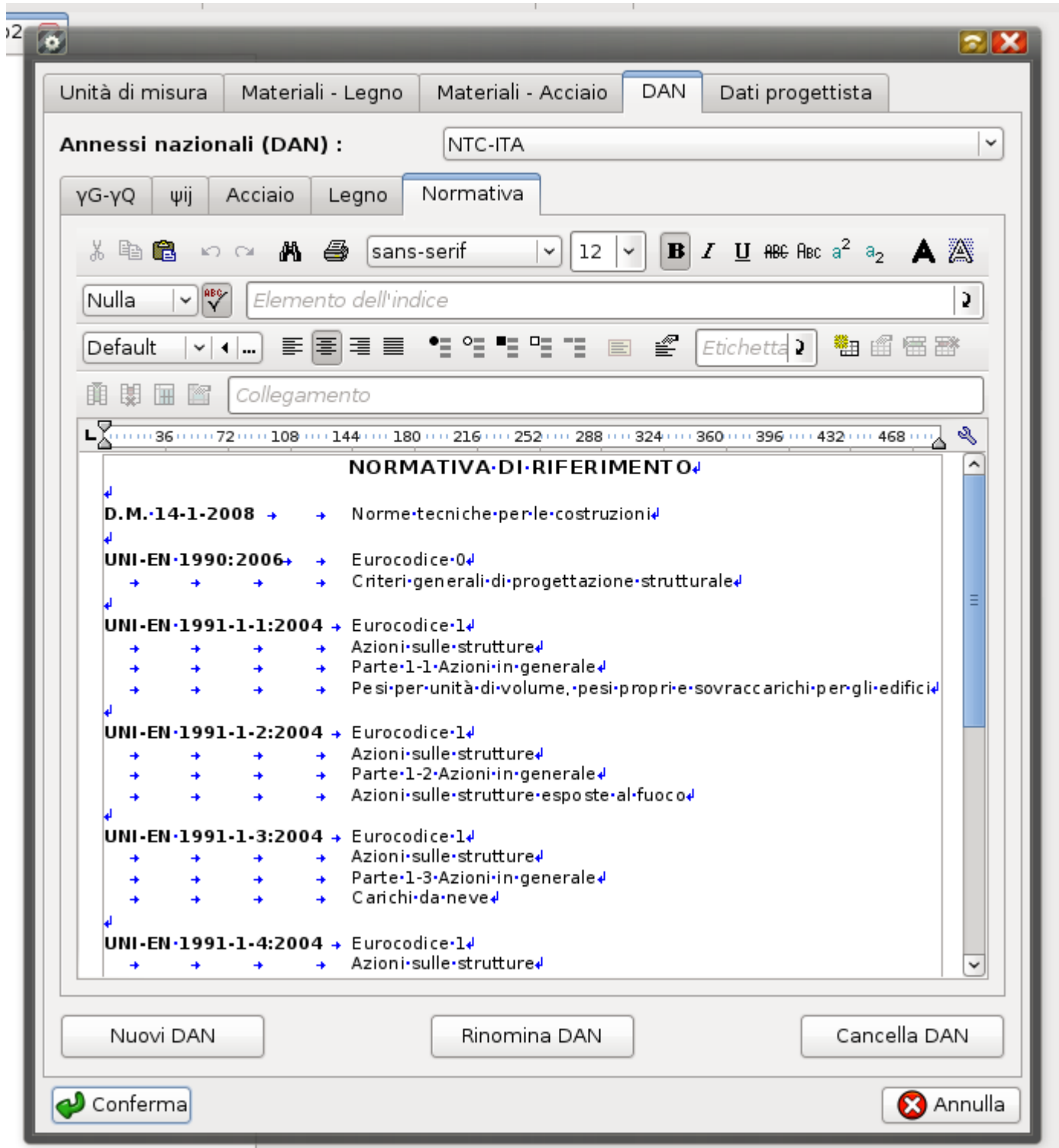
Posted by [mdelfede](#) on Mon, 30 Aug 2010 09:29:31 GMT

[View Forum Message](#) <> [Reply to Message](#)

And another one :

File Attachments

1) [L\\$settingsDANnorm\\$it-it_0.png](#), downloaded 1495 times



Subject: Re: TimberStruct - Timber Structural analysis application

Posted by [mdelfede](#) on Wed, 23 Feb 2011 22:29:56 GMT

[View Forum Message](#) <> [Reply to Message](#)

Finally the website is ready

<http://www.timberstruct.it/>

App is still in beta testing and website just in Italian, but things are moving on

Ciao

Max

Subject: Re: TimberStruct - Timber Structural analysis application

Posted by [koldo](#) on Thu, 24 Feb 2011 09:18:26 GMT

[View Forum Message](#) <> [Reply to Message](#)

Great

U++ for architecture. beautiful pictures.

And ...

Quote:TimberStruct utilizza un sistema di licenze gestito via internet.

Subject: Re: TimberStruct - Timber Structural analysis application

Posted by [mdelfede](#) on Thu, 24 Feb 2011 12:48:07 GMT

[View Forum Message](#) <> [Reply to Message](#)

Ehehehehe..... My app contains half of Bazaar stuffs inside

Ciao

Max

Subject: Re: TimberStruct - Timber Structural analysis application

Posted by [mdelfede](#) on Fri, 04 Nov 2011 11:26:35 GMT

[View Forum Message](#) <> [Reply to Message](#)

English website is up !

www.timberstruct.com

Max

Subject: Re: TimberStruct - Timber Structural analysis application

Posted by [koldo](#) on Fri, 04 Nov 2011 12:37:25 GMT

[View Forum Message](#) <> [Reply to Message](#)

Nice looking

Subject: Re: TimberStruct - Timber Structural analysis application

Posted by [mr_ped](#) on Fri, 04 Nov 2011 13:02:08 GMT

[View Forum Message](#) <> [Reply to Message](#)

you have some typos on staff page: <http://www.timberstruct.com/staff.html>

"ant", "tema", "operanti"

Unfortunately I'm not good enough at grammar to check it even better. Nice project, good luck.

Subject: Re: TimberStruct - Timber Structural analysis application

Posted by [mdelfede](#) on Fri, 04 Nov 2011 13:09:28 GMT

[View Forum Message](#) <> [Reply to Message](#)

Ah, thank you very much

I'm not so good in English either.... I hope it's not too bad.

BTW, I see that making english texts at 2 o'clock in the night is not a good idea

Max
