
Subject: TheIDE doesn't compile since version 7972 2014-12-13

Posted by [Lance](#) on Fri, 27 Feb 2015 19:13:49 GMT

[View Forum Message](#) <> [Reply to Message](#)

Not sure if it is just me, but versions of TheIDE after 7972 cannot build even the simplest sample package on my windows machine. I use visual c++ express 2013 as backend. It works fine until after 7972 (or slightly later) when 64bit TheIDE was introduced. I waited in hope subsequent version will fix it but it doesn't and apparently it's only me who is encountering this problem. The error message is something like:

Cannot find include file xxxx.h (windef.h?)

Downgrade to version 7972 fixed the problem.

I guess the way that TheIDE tells vc++ to look for include file has been changed. Mysteriously it's only me whom are affected.

Please let me know if you need more details.

Thanks,

Lance

Subject: Re: TheIDE doesn't compile since version 7972 2014-12-13

Posted by [mirek](#) on Sat, 28 Feb 2015 10:01:43 GMT

[View Forum Message](#) <> [Reply to Message](#)

Well, definitely include path problem.

You can specify include paths in Setup/Build methods...

Please post here what was problem.

Also, is this happening with freshly installed U++?

What exactly do you have installed as build system? I mean, visual C++ express 2013 and windows SDK? What version?

Mirek

Subject: Re: TheIDE doesn't compile since version 7972 2014-12-13

Posted by [Lance](#) on Sun, 01 Mar 2015 15:38:08 GMT

[View Forum Message](#) <> [Reply to Message](#)

Hi Mirek:

Thanks for the quick reply.

Compile AddressBook in examples with version 8173, The error message is:

Quote:

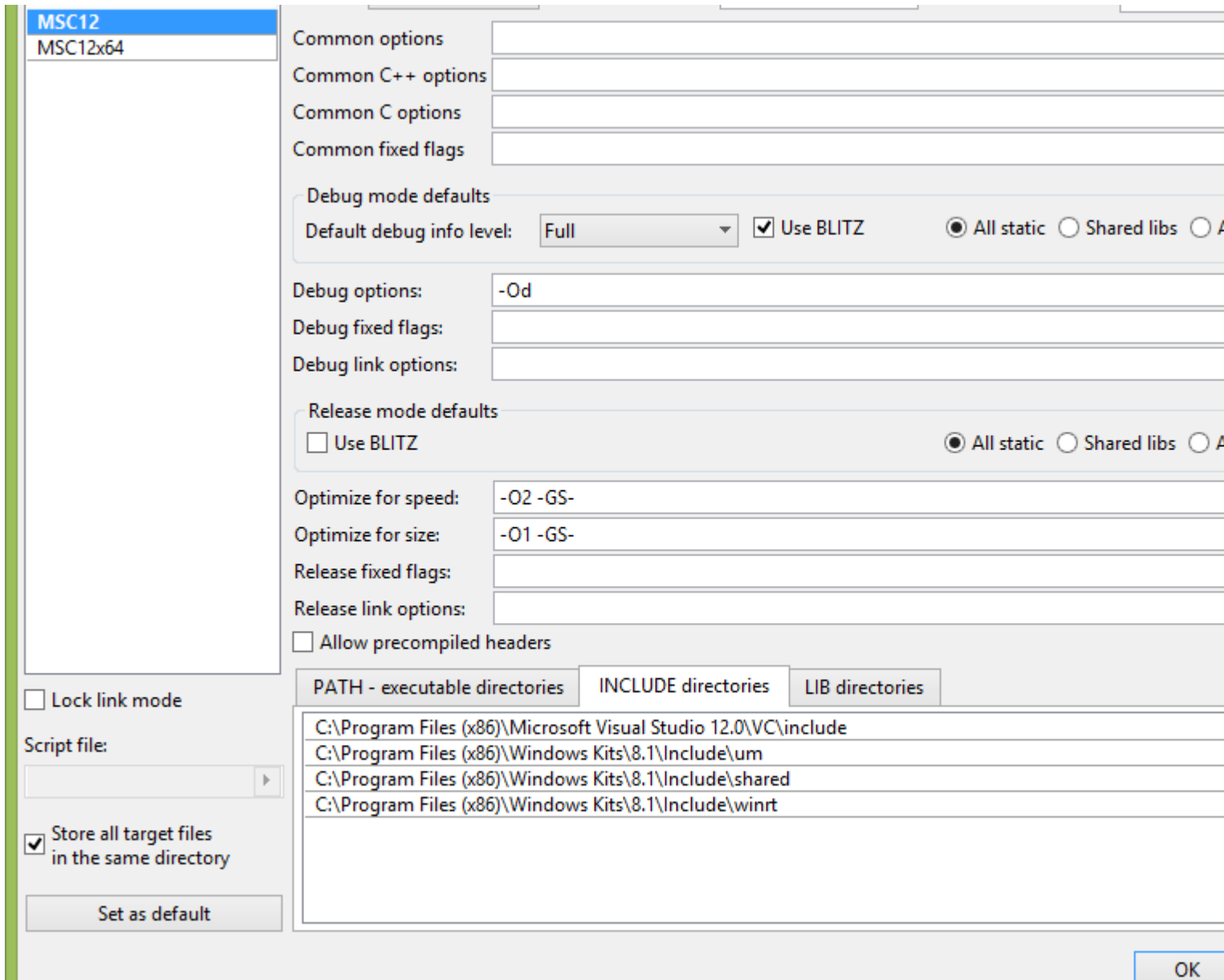
fatal error C1083: Cannot open included file: 'windef.h': No such file or directory

And yes, it's happening with freshly installed U++.

And here is what shows in the working version of TheIDE (also automatically populated--absolutely on human intervention)

File Attachments

1) [right.png](#), downloaded 736 times



Subject: Re: TheIDE doesn't compile since version 7972 2014-12-13

Posted by [Lance](#) on Sun, 01 Mar 2015 15:42:56 GMT

[View Forum Message](#) <> [Reply to Message](#)

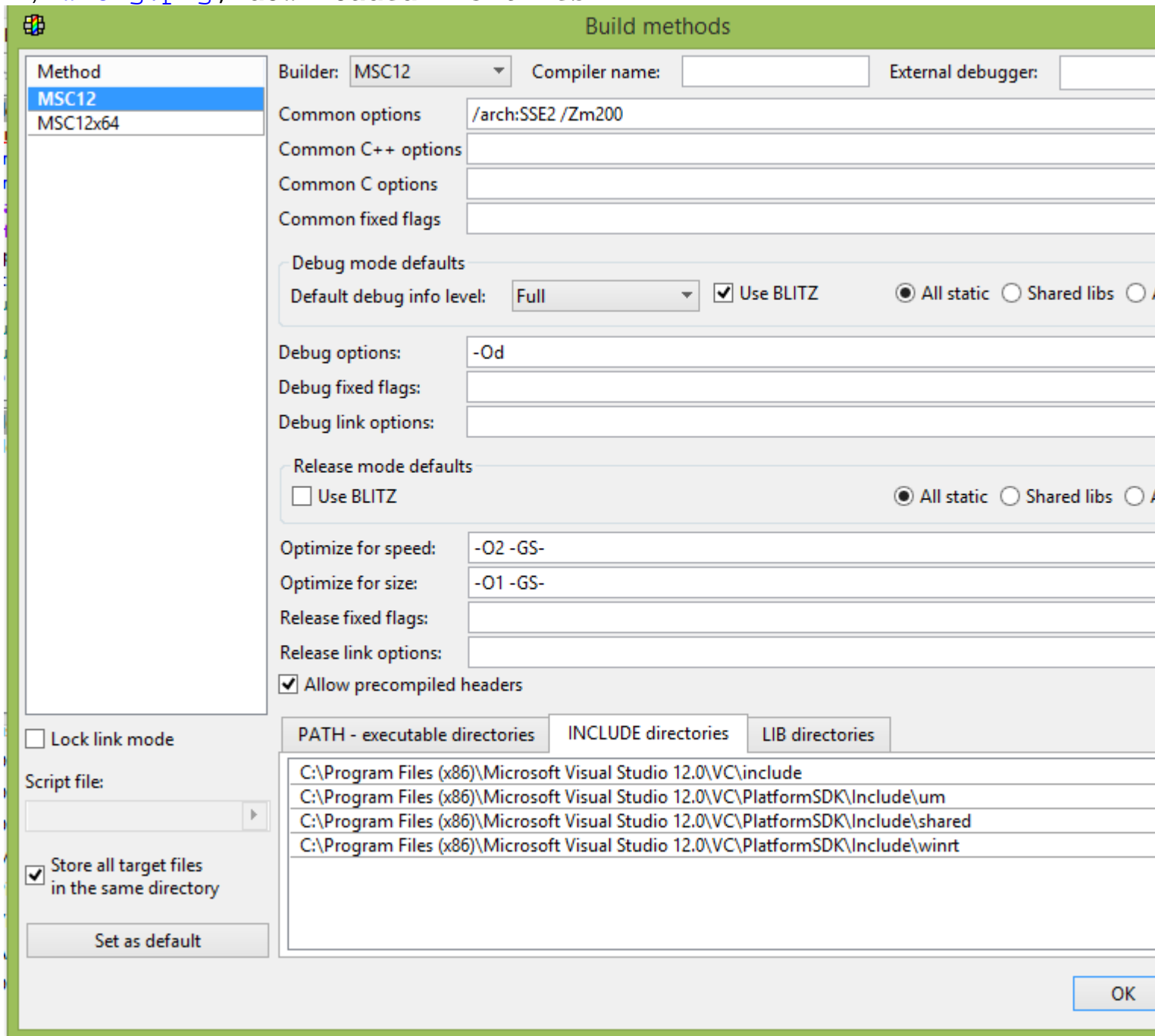
And that for Version 8173, also automatically populated and not working.

Now I see why it won't compile.

Thanks,
Lance

File Attachments

1) [wrong.png](#), downloaded 713 times



Subject: Re: TheIDE doesn't compile since version 7972 2014-12-13

Posted by [mirek](#) on Sun, 01 Mar 2015 16:40:03 GMT

[View Forum Message](#) <> [Reply to Message](#)

Now this is quite interesting, as there were no relevant changes in the code.

Most likely issue is that TheIDE is not able to detect correct SDK path. What do you see in

Setup/Automatic Setup.. as SDK for VC 2012 ?

What SDK do you have installed? (AFAIK, you need to install separate SDK for VC2012 Express).

Subject: Re: TheIDE doesn't compile since version 7972 2014-12-13

Posted by [koldo](#) on Sun, 01 Mar 2015 18:35:01 GMT

[View Forum Message](#) <> [Reply to Message](#)

Hello all

Just a detail. When I installed VS2012 Express, U++ detected the folders perfectly. However, when I desinstalled it and installed the VS2012 Professional, the folders seemd to be wrong so both Express and Professional use different folders.

For VS2012 64 I use these folders:

- Include

C:\Program Files (x86)\Microsoft Visual Studio 12.0\VC\include

C:\Program Files (x86)\Windows Kits\8.1\Include\um

C:\Program Files (x86)\Windows Kits\8.1\Include\shared

- Lib

C:\Program Files (x86)\Microsoft Visual Studio 12.0\VC\lib\amd64

C:\Program Files (x86)\Windows Kits\8.1\Lib\winv6.3\um\x64

- Path

C:\Program Files (x86)\Microsoft Visual Studio 12.0\Common7\IDE

C:\Program Files (x86)\Microsoft Visual Studio 12.0\VC\bin\x86_amd64

C:\Program Files (x86)\Microsoft Visual Studio 12.0\VC\bin

Subject: Re: TheIDE doesn't compile since version 7972 2014-12-13

Posted by [Lance](#) on Sun, 01 Mar 2015 22:45:26 GMT

[View Forum Message](#) <> [Reply to Message](#)

Hi Merik:

Maybe I forgot to install SDK for vc++express 2013 as it just worked, until sometime in December 2014. I think it might have to do with the introduction of 64bit version of theide and some subtle change associated with that.

I will try to install the correct SDK and see if the problem goes away.

And thank you both, mirek and koldo!
